

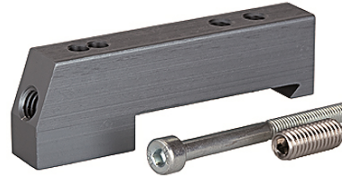
K-ADA HUTPROFIL

Adapter for DIN rail

HANSA FLEX

Właściwości

Czynniki robocze	Filtered, unlubricated or lubricated compressed air. If lubrication is used, it must be continuous.
Ciśnienie pracy	Max. vacuum 10 bar (external pilots), 3 to 7 bar (internal pilots as standard)
ciśnienie sterujące	3 - 7 bar
Zakres temperatury	-10 °C to +60 °C
Przepływ	200 NI/min (Ø 4), 500 NI/min (Ø 6), 800 NI/min (Ø 8)
liczba wysteroowań	Max. 16 (e.g. 16 spring return valves)
Pomocniczy napęd ręczny	Latching (bistable), Monostable (non-latching) version also available on request
Pobór mocy	0.6 W per pilot
rodzaj ochrony	IP 65



Wskazówka

Dalsze informacje na zapytanie.

Opis

These compact valve terminals, with a maximum flow rate of 800 NI/min, can be individually adapted to the specific conditions of each application thanks to the wide range of functions and various input and intermediate plates. Since each valve terminal is a customer-specific combination of a series of individual elements, the catalogue only lists the available input, intermediate and end plates as well as the different valve discs and the 25-pin multi-pole connectors.

Dodatkowe informacje

Important: The scope of supply does not include a connector. Please order separately.

Artykuł

Oznaczenie	Definicja
K- 07 15 22 43	Adapter for DIN rail