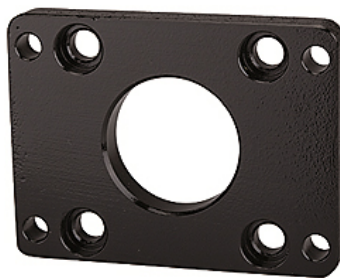


# K-FLANSCHBEFESTIGUNG TYP FA2

Flange model, »FA« type

**HANSA FLEX**



## Artykuł

| Oznaczenie     | Ø tłok |
|----------------|--------|
| K- 07 15 24 50 | 12 mm  |
| K- 07 15 24 51 | 16 mm  |
| K- 07 15 24 52 | 20 mm  |
| K- 07 15 24 53 | 25 mm  |
| K- 07 15 24 54 | 32 mm  |
| K- 07 15 24 55 | 40 mm  |
| K- 07 15 24 56 | 50 mm  |
| K- 07 15 24 57 | 63 mm  |
| K- 07 15 24 58 | 80 mm  |
| K- 07 15 24 59 | 100 mm |

## są akcesoriami do następujących produktów

|                              |  |
|------------------------------|--|
| K-KURZH ZYL DOPPELW IG ASQ   | Short-stroke cylinders, double-acting, with magnet, non-cushioned, with female thread, »ACQ« Series  |
| K-KURZH ZYL EINFACHW SER ASQ | Short-stroke cylinders, single-acting (pressureless in the retracted position), with magnet, non-cushioned, with female thread, »ASQ« Series |