

K-SCHOTT-STECKVERB RED

Female bulkhead connectors, unequal

HANSA FLEX

Właściwości

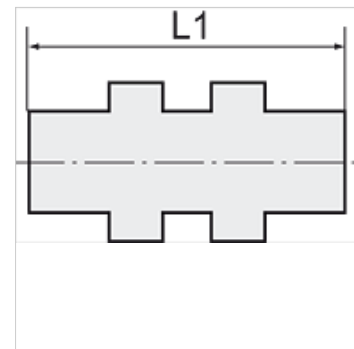
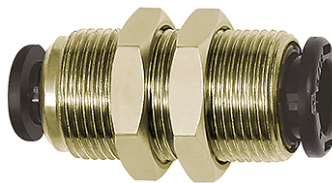
Ciśnienie pracy Max. 16 bar

Temperatura robocza -20 °C to +80 °C

Materiał mosiądz nikielowany

pierścień dociskowy Hostaform

pierścień zaciskowy Stainless steel



Wskazówka

Dalsze informacje na zapytanie.

Opis

The advanced version of our highly successful push-in fittings series manufactured in nickel-plated brass. Advantages of this new, optimised series: Much easier connection and disconnection of the hose, even with repeated mounting, can also be used for non-calibrated hoses, suitable for vacuum operation.

Artykuł

Oznaczenie	Gwint	do średnicy zewnętrznej węża Ø mm	L1 (mm)	RK
K- 07 40 25 51	M 13 x 1	4 mm / 6 mm	32,7	16 mm
K- 07 40 25 54	M 15 x 1	4 mm / 8 mm	34,4	17 mm
K- 07 40 25 55	M 15 x 1	6 mm / 8 mm	35,0	17 mm
K- 07 40 25 57	M 17 x 1	6 mm / 10 mm	37,5	20 mm
K- 07 40 25 58	M 17 x 1	8 mm / 10 mm	37,8	20 mm
K- 07 40 47 17	M 20 x 1	10 mm / 12 mm	40,8	24 mm
K- 07 40 47 18	M 20 x 1	6 mm / 12 mm	39,0	24 mm
K- 07 40 47 19	M 20 x 1	8 mm / 12 mm	40,1	24 mm