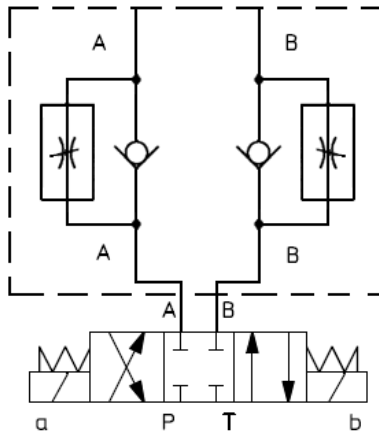


# HK HQ 01/02

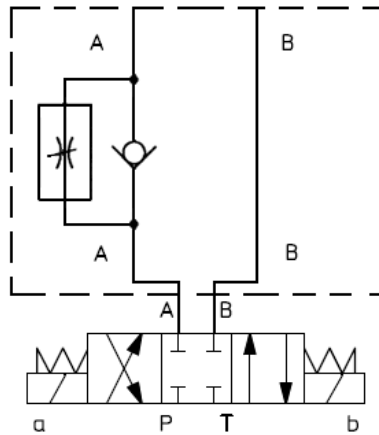
Drosselrückschlagventil  
Throttle check valve



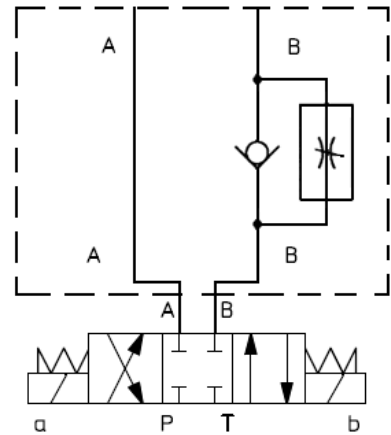
## Schaltsymbole, Ausführungen / Symbols, Design



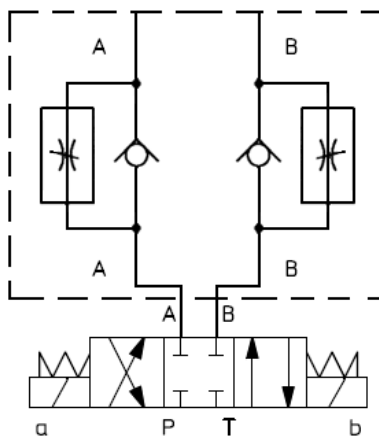
HK HQ 012



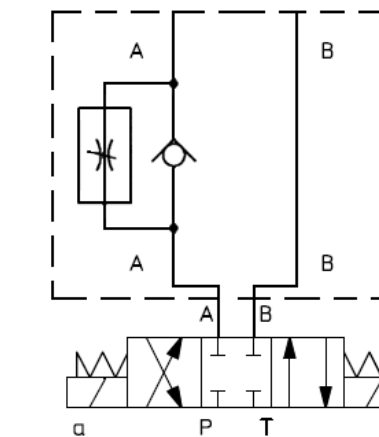
HK HQ 013



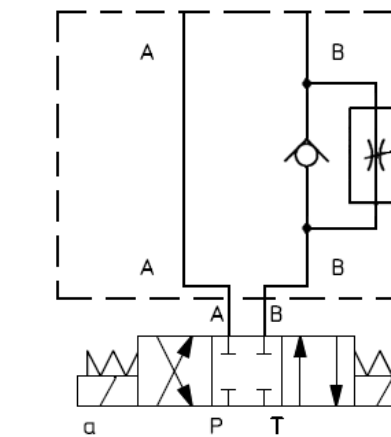
HK HQ 014



HK HQ 022



HK HQ 023



HK HQ 024

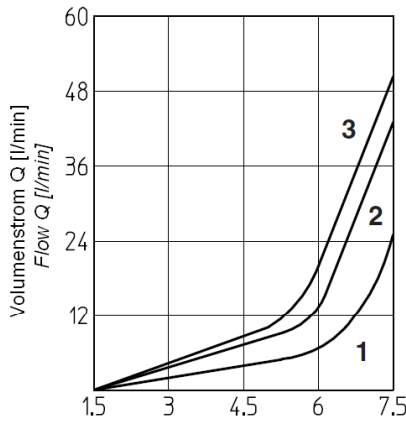
# HK HQ 01/02

Drosselrückschlagventil  
Throttle check valve

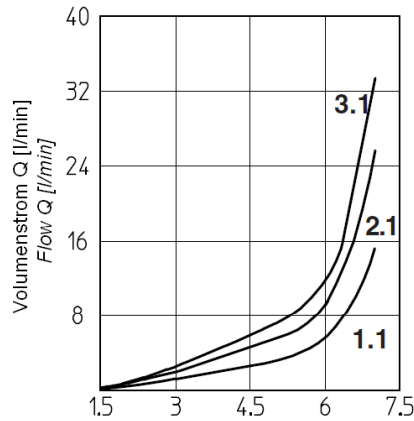
**HANSA FLEX**

## Kennlinien / diagram

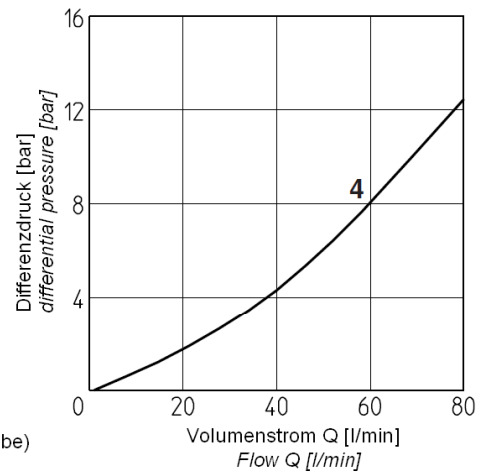
### HK HQ 01/02



Einstellung (Umdrehung Einstellschraube)  
Setting (knob turns)



Einstellung (Umdrehung Einstellschraube)  
Setting (knob turns)

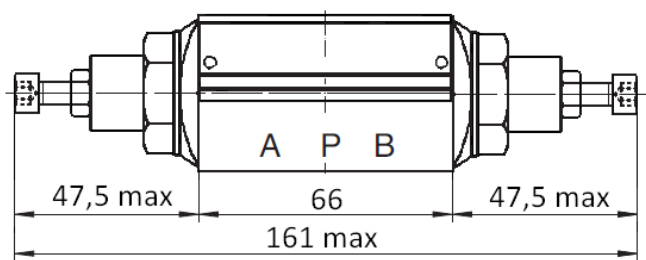
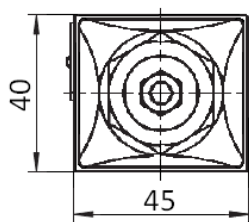


- 1- Regelkennlinie mit  $\Delta p$  10 bar (1.1 = Option "U")
- 2- Regelkennlinie mit  $\Delta p$  30 bar (2.1 = Option "U")
- 3- Regelkennlinie mit  $\Delta p$  50 bar (3.1 = Option "U")
- 4- Kennlinie bei freiem Durchfluss durch Rückschlagventil

- 1- Regulation diagramm at  $\Delta p$  10 bar (1.1 = option "U")
- 2- Regulation diagramm at  $\Delta p$  30 bar (2.1 = option "U")
- 3- Regulation diagramm at  $\Delta p$  50 bar (3.1 = option "U")
- 4- Diagramm at free flow through the non return valve

## Abmessungen / Dimensions

HK HQ 012  
HK HQ 022



HK HQ 013  
HK HQ 014  
HK HQ 023  
HK HQ 024

