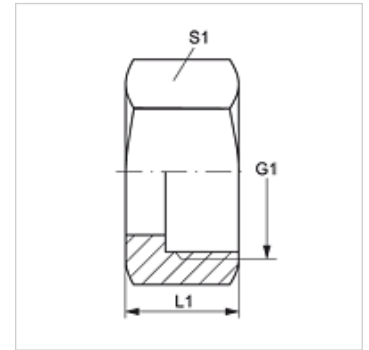
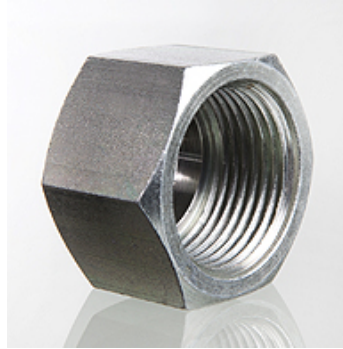


Características

| | |
|------------------------|------------------------------|
| Conexão 1 | Rosca fêmea BSP |
| Tipo | Porca |
| Norma | ISO 8434-6 |
| Material | Aço |
| Proteção de superfície | com revestimento galvanizado |



Artigo

| Descrição | G1 | L1 (mm) | S1 |
|-----------|------------------|------------|----|
| UEM AB 02 | Rosca 1/8" -28 | 15,0 | 14 |
| UEM AB 04 | Rosca 1/4" -19 | 15,0 | 17 |
| UEM AB 06 | Rosca 3/8" -19 | 18,0 | 22 |
| UEM AB 08 | Rosca 1/2" -14 | 20,0 | 27 |
| UEM AB 10 | Rosca 5/8" -14 | 23,0 | 27 |
| UEM AB 12 | Rosca 3/4" -14 | 23,0 | 32 |
| UEM AB 16 | Rosca 1" -11 | 26,0 | 41 |
| UEM AB 20 | Rosca 1.1/4" -11 | 28,0 | 50 |
| UEM AB 24 | Rosca 1.1/2" -11 | 32,5 | 60 |

SW, S1, S2 = tamanho da chave