

# UEM AJ VA

Porca AJ

**HANSA FLEX**

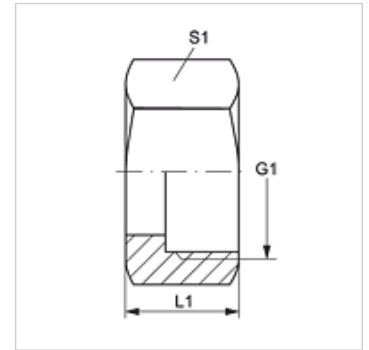
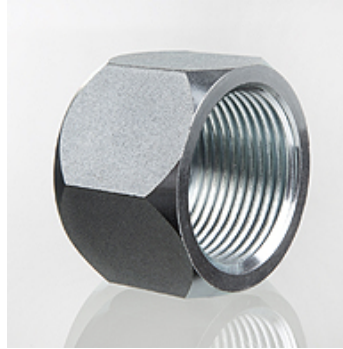
## Características

**Conexão 1** Rosca interna UN/UNF

**Tipo** Porca

**Norma** ISO 8434-2

**Material** Aço inoxidável



## Artigo

| Descrição    | G1             | S1 | L1<br>(mm) |
|--------------|----------------|----|------------|
| UEM AJ 04 VA | 7/16" -20 UNF  | 14 | 16,0       |
| UEM AJ 05 VA | 1/2" -20 UNF   | 17 | 17,0       |
| UEM AJ 06 VA | 9/16" -18 UNF  | 19 | 18,0       |
| UEM AJ 08 VA | 3/4" -16 UNF   | 22 | 21,0       |
| UEM AJ 10 VA | 7/8" -14 UNF   | 27 | 25,0       |
| UEM AJ 12 VA | 1.1/16" -12 UN | 32 | 26,0       |
| UEM AJ 16 VA | 1.5/16" -12 UN | 41 | 28,0       |
| UEM AJ 20 VA | 1.5/8" -12 UN  | 50 | 31,0       |
| UEM AJ 24 VA | 1.7/8" -12 UN  | 60 | 36,0       |

## Variantes do produto

UEM AJ Porca AJ, Aço