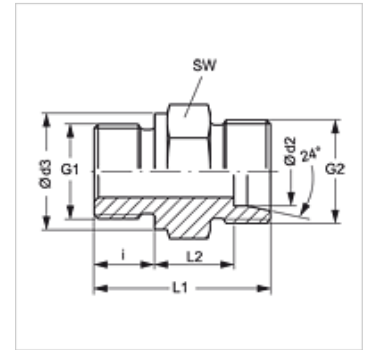


## Características

|                        |                                  |
|------------------------|----------------------------------|
| Conexão 1              | Rosca externa métrica cilíndrica |
| Tipo de vedação 1      | Forma B                          |
| Conexão 2              | Rosca externa métrica cilíndrica |
| Tipo de vedação 2      | Cone interno 24°                 |
| Tipo                   | União macho                      |
| Modelo                 | reto                             |
| Norma                  | DIN 2353<br>ISO 8434-1           |
| Escopo de fornecimento | Conexão (sem porca e anilha)     |
| Material               | Aço                              |
| Proteção de superfície | com revestimento galvanizado     |



## Nota

As instruções relativas à montagem e instalação, às cargas de pressão e às temperaturas operacionais admissíveis constam nas Informações Técnicas para Conexões para tubo.

## Artigo

| Descrição           | Série | Pressão operacional bar | Ø d2 (mm) | G1         | G2         | Ø d3 (mm) | i (mm) | L1 (mm) | L2 (mm) | SW (mm) |
|---------------------|-------|-------------------------|-----------|------------|------------|-----------|--------|---------|---------|---------|
| XVM 16 LL           | LL    | PN 100                  | 16        | M 22 x 1,5 | M 22 x 1,5 | 27        | 14     | 36,5    | 15,5    | 27      |
| XVM 16 LL 18-1.5    | LL    | PN 100                  | 16        | M 18 x 1,5 | M 22 x 1,5 | 23        | 12     | 33,5    | 14,5    | 24      |
| XVM NW 04 HL        | L     | PN 315                  | 6         | M 10 x 1   | M 12 x 1,5 | 14        | 8      | 23,5    | 8,5     | 14      |
| XVM NW 04 HL 12     | L     | PN 315                  | 6         | M 12 x 1,5 | M 12 x 1,5 | 17        | 12     | 28,0    | 9,0     | 17      |
| XVM NW 04 HL 14     | L     | PN 315                  | 6         | M 14 x 1,5 | M 12 x 1,5 | 19        | 12     | 28,0    | 9,0     | 19      |
| XVM NW 04 HL 16     | L     | PN 315                  | 6         | M 16 x 1,5 | M 12 x 1,5 | 21        | 12     | 28,0    | 9,0     | 22      |
| XVM NW 04 HL 18     | L     | PN 315                  | 6         | M 18 x 1,5 | M 12 x 1,5 | 23        | 12     | 28,5    | 9,5     | 24      |
| XVM NW 04 HL 22     | L     | PN 315                  | 6         | M 22 x 1,5 | M 12 x 1,5 | 27        | 14     | 31,0    | 10,0    | 27      |
| XVM NW 06 HL        | L     | PN 315                  | 8         | M 12 x 1,5 | M 14 x 1,5 | 17        | 12     | 29,0    | 10,0    | 17      |
| XVM NW 06 HL 10     | L     | PN 315                  | 8         | M 10 x 1   | M 14 x 1,5 | 14        | 8      | 24,5    | 9,5     | 17      |
| XVM NW 06 HL 14     | L     | PN 315                  | 8         | M 14 x 1,5 | M 14 x 1,5 | 19        | 12     | 29,0    | 10,0    | 19      |
| XVM NW 06 HL 16     | L     | PN 315                  | 8         | M 16 x 1,5 | M 14 x 1,5 | 21        | 12     | 29,0    | 10,0    | 22      |
| XVM NW 06 HL 18     | L     | PN 315                  | 8         | M 18 x 1,5 | M 14 x 1,5 | 23        | 12     | 29,5    | 10,5    | 24      |
| XVM NW 06 HL 22     | L     | PN 315                  | 8         | M 22 x 1,5 | M 14 x 1,5 | 27        | 14     | 32,0    | 11,0    | 27      |
| XVM NW 08 HL        | L     | PN 315                  | 10        | M 14 x 1,5 | M 16 x 1,5 | 19        | 12     | 30,0    | 11,0    | 19      |
| XVM NW 08 HL 12     | L     | PN 315                  | 10        | M 12 x 1,5 | M 16 x 1,5 | 17        | 12     | 30,0    | 11,0    | 17      |
| XVM NW 08 HL 16     | L     | PN 315                  | 10        | M 16 x 1,5 | M 16 x 1,5 | 21        | 12     | 30,0    | 11,0    | 22      |
| XVM NW 08 HL 18     | L     | PN 315                  | 10        | M 18 x 1,5 | M 16 x 1,5 | 23        | 12     | 30,5    | 11,5    | 24      |
| XVM NW 08 HL 22     | L     | PN 315                  | 10        | M 22 x 1,5 | M 16 x 1,5 | 27        | 14     | 33,0    | 12,0    | 27      |
| XVM NW 10 HL        | L     | PN 315                  | 12        | M 16 x 1,5 | M 18 x 1,5 | 21        | 12     | 31,5    | 12,5    | 22      |
| XVM NW 10 HL 12     | L     | PN 315                  | 12        | M 12 x 1,5 | M 18 x 1,5 | 17        | 12     | 31,5    | 12,5    | 19      |
| XVM NW 10 HL 14     | L     | PN 315                  | 12        | M 14 x 1,5 | M 18 x 1,5 | 19        | 12     | 31,5    | 12,5    | 22      |
| XVM NW 10 HL 18     | L     | PN 315                  | 12        | M 18 x 1,5 | M 18 x 1,5 | 23        | 12     | 32,0    | 13,0    | 24      |
| XVM NW 10 HL 22     | L     | PN 315                  | 12        | M 22 x 1,5 | M 18 x 1,5 | 27        | 14     | 34,5    | 13,5    | 27      |
| XVM NW 10 HL 24     | L     | PN 315                  | 12        | M 24 x 1,5 | M 18 x 1,5 | 29        | 14     | 34,5    | 13,5    | 32      |
| XVM NW 10 HL 26     | L     | PN 315                  | 12        | M 26 x 1,5 | M 18 x 1,5 | 31        | 16     | 36,5    | 13,5    | 32      |
| XVM NW 13 HL        | L     | PN 315                  | 15        | M 18 x 1,5 | M 22 x 1,5 | 23        | 12     | 32,5    | 13,5    | 24      |
| XVM NW 13 HL 14     | L     | PN 315                  | 15        | M 14 x 1,5 | M 22 x 1,5 | 19        | 12     | 32,0    | 13,0    | 24      |
| XVM NW 13 HL 16     | L     | PN 315                  | 15        | M 16 x 1,5 | M 22 x 1,5 | 21        | 12     | 32,0    | 13,0    | 24      |
| XVM NW 13 HL 20     | L     | PN 250                  | 15        | M 20 x 1,5 | M 22 x 1,5 | 25        | 14     | 34,5    | 13,5    | 27      |
| XVM NW 13 HL 22     | L     | PN 315                  | 15        | M 22 x 1,5 | M 22 x 1,5 | 27        | 14     | 35,0    | 14,0    | 27      |
| XVM NW 13 HL 26     | L     | PN 315                  | 15        | M 26 x 1,5 | M 22 x 1,5 | 31        | 16     | 37,0    | 14,0    | 32      |
| XVM NW 13 HL 30     | L     | PN 315                  | 15        | M 30 x 2   | M 22 x 1,5 | 36        | 16     | 37,0    | 14,0    | 41      |
| XVM NW 16 HL        | L     | PN 315                  | 18        | M 22 x 1,5 | M 26 x 1,5 | 27        | 14     | 36,0    | 14,5    | 27      |
| XVM NW 16 HL 18     | L     | PN 315                  | 18        | M 18 x 1,5 | M 26 x 1,5 | 23        | 12     | 33,5    | 14,0    | 27      |
| XVM NW 16 HL 26     | L     | PN 315                  | 18        | M 26 x 1,5 | M 26 x 1,5 | 31        | 16     | 38,0    | 14,5    | 32      |
| XVM NW 16 HL 27     | L     | PN 315                  | 18        | M 27 x 2   | M 26 x 1,5 | 32        | 16     | 38,0    | 14,5    | 32      |
| XVM NW 16 HL 30-1.5 | L     | PN 315                  | 18        | M 30 x 1,5 | M 26 x 1,5 | 36        | 16     | 38,0    | 14,5    | 41      |
| XVM NW 20 HL        | L     | PN 160                  | 22        | M 26 x 1,5 | M 30 x 2   | 31        | 16     | 40,0    | 16,5    | 32      |
| XVM NW 20 HL 18     | L     | PN 160                  | 22        | M 18 x 1,5 | M 30 x 2   | 23        | 12     | 35,5    | 16,0    | 32      |
| XVM NW 20 HL 22     | L     | PN 160                  | 22        | M 22 x 1,5 | M 30 x 2   | 27        | 14     | 38,0    | 16,5    | 32      |



## Artigo

| Descrição             | Série | Pressão operacional bar | Ø d2 (mm) | G1         | G2         | Ø d3 (mm) | i (mm) | L1 (mm) | L2 (mm) | SW (mm) |
|-----------------------|-------|-------------------------|-----------|------------|------------|-----------|--------|---------|---------|---------|
| XVM NW 20 HL 22-LS 20 | L     | PN 160                  | 22        | M 22 x 1,5 | M 30 x 2   | 27        | 14     | 60,0    | 38,5    | 32      |
| XVM NW 20 HL 30-1.5   | L     | PN 160                  | 22        | M 30 x 1,5 | M 30 x 2   | 36        | 16     | 40,0    | 16,5    | 41      |
| XVM NW 20 HL 33-LS 20 | L     | PN 160                  | 22        | M 33 x 2   | M 30 x 2   | 39        | 18     | 62,0    | 36,5    | 41      |
| XVM NW 25 HL          | L     | PN 160                  | 28        | M 33 x 2   | M 36 x 2   | 39        | 18     | 43,0    | 17,5    | 41      |
| XVM NW 25 HL-LS 20    | L     | PN 160                  | 28        | M 33 x 2   | M 36 x 2   | 39        | 18     | 60,0    | 23,5    | 41      |
| XVM NW 25 HL 22       | L     | PN 160                  | 28        | M 22 x 1,5 | M 36 x 2   | 27        | 14     | 39,0    | 17,5    | 41      |
| XVM NW 25 HL 26       | L     | PN 160                  | 28        | M 26 x 1,5 | M 36 x 2   | 31        | 16     | 41,0    | 17,5    | 41      |
| XVM NW 25 HL 27       | L     | PN 160                  | 28        | M 27 x 2   | M 36 x 2   | 32        | 16     | 41,0    | 17,5    | 41      |
| XVM NW 25 HL 42       | L     | PN 160                  | 28        | M 42 x 2   | M 36 x 2   | 49        | 22     | 45,0    | 17,5    | 50      |
| XVM NW 32 HL          | L     | PN 160                  | 35        | M 42 x 2   | M 45 x 2   | 49        | 20     | 48,0    | 17,5    | 50      |
| XVM NW 40 HL          | L     | PN 160                  | 42        | M 48 x 2   | M 52 x 2   | 55        | 22     | 52,0    | 19,0    | 55      |
| XVM NW 03 HS          | S     | PN 400                  | 6         | M 12 x 1,5 | M 14 x 1,5 | 17        | 12     | 32,0    | 13,0    | 17      |
| XVM NW 03 HS 16       | S     | PN 400                  | 6         | M 16 x 1,5 | M 14 x 1,5 | 21        | 12     | 32,0    | 13,0    | 22      |
| XVM NW 03 HS 18       | S     | PN 400                  | 6         | M 18 x 1,5 | M 14 x 1,5 | 23        | 12     | 32,5    | 13,5    | 24      |
| XVM NW 03 HS 22       | S     | PN 400                  | 6         | M 22 x 1,5 | M 14 x 1,5 | 27        | 14     | 35,0    | 14,0    | 27      |
| XVM NW 04 HS          | S     | PN 400                  | 8         | M 14 x 1,5 | M 16 x 1,5 | 19        | 12     | 34,0    | 15,0    | 19      |
| XVM NW 06 HS          | S     | PN 400                  | 10        | M 16 x 1,5 | M 18 x 1,5 | 21        | 12     | 34,5    | 15,0    | 22      |
| XVM NW 06 HS 18       | S     | PN 400                  | 10        | M 18 x 1,5 | M 18 x 1,5 | 23        | 12     | 35,0    | 15,5    | 24      |
| XVM NW 06 HS 22       | S     | PN 400                  | 10        | M 22 x 1,5 | M 18 x 1,5 | 27        | 14     | 37,5    | 16,0    | 27      |
| XVM NW 08 HS          | S     | PN 400                  | 12        | M 18 x 1,5 | M 20 x 1,5 | 23        | 12     | 36,5    | 17,0    | 24      |
| XVM NW 08 HS 14       | S     | PN 400                  | 12        | M 14 x 1,5 | M 20 x 1,5 | 19        | 12     | 36,0    | 16,5    | 22      |
| XVM NW 08 HS 16       | S     | PN 400                  | 12        | M 16 x 1,5 | M 20 x 1,5 | 21        | 12     | 36,0    | 16,5    | 22      |
| XVM NW 08 HS 22       | S     | PN 400                  | 12        | M 22 x 1,5 | M 20 x 1,5 | 27        | 14     | 39,0    | 17,5    | 27      |
| XVM NW 10 HS          | S     | PN 400                  | 14        | M 20 x 1,5 | M 22 x 1,5 | 25        | 14     | 41,0    | 19,0    | 27      |
| XVM NW 10 HS 16       | S     | PN 400                  | 14        | M 16 x 1,5 | M 22 x 1,5 | 21        | 12     | 38,5    | 18,5    | 24      |
| XVM NW 10 HS 18       | S     | PN 400                  | 14        | M 18 x 1,5 | M 22 x 1,5 | 23        | 12     | 39,0    | 19,0    | 24      |
| XVM NW 10 HS 22       | S     | PN 400                  | 14        | M 22 x 1,5 | M 22 x 1,5 | 27        | 14     | 41,5    | 19,5    | 27      |
| XVM NW 13 HS          | S     | PN 400                  | 16        | M 22 x 1,5 | M 24 x 1,5 | 27        | 14     | 41,0    | 18,5    | 27      |
| XVM NW 13 HS 16       | S     | PN 400                  | 16        | M 16 x 1,5 | M 24 x 1,5 | 21        | 12     | 38,0    | 17,5    | 27      |
| XVM NW 13 HS 18       | S     | PN 400                  | 16        | M 18 x 1,5 | M 24 x 1,5 | 23        | 12     | 38,5    | 18,0    | 27      |
| XVM NW 13 HS 26       | S     | PN 400                  | 16        | M 26 x 1,5 | M 24 x 1,5 | 31        | 16     | 43,0    | 18,5    | 32      |
| XVM NW 16 HS          | S     | PN 400                  | 20        | M 27 x 2   | M 30 x 2   | 32        | 16     | 47,0    | 20,5    | 32      |
| XVM NW 16 HS 22       | S     | PN 400                  | 20        | M 22 x 1,5 | M 30 x 2   | 27        | 14     | 45,0    | 20,5    | 32      |
| XVM NW 16 HS 26       | S     | PN 400                  | 20        | M 26 x 1,5 | M 30 x 2   | 32        | 16     | 47,0    | 20,5    | 32      |
| XVM NW 16 HS 30-1.5   | S     | PN 400                  | 20        | M 30 x 1,5 | M 30 x 2   | 36        | 16     | 47,0    | 20,5    | 36      |
| XVM NW 20 HS          | S     | PN 250                  | 25        | M 33 x 2   | M 36 x 2   | 39        | 18     | 53,0    | 23,0    | 41      |
| XVM NW 20 HS 26       | S     | PN 250                  | 25        | M 26 x 1,5 | M 36 x 2   | 32        | 16     | 49,0    | 20,0    | 41      |
| XVM NW 20 HS 27       | S     | PN 250                  | 25        | M 27 x 2   | M 36 x 2   | 32        | 16     | 51,0    | 23,0    | 41      |
| XVM NW 20 HS 30-1.5   | S     | PN 250                  | 25        | M 30 x 1,5 | M 36 x 2   | 36        | 16     | 51,0    | 23,0    | 41      |
| XVM NW 25 HS          | S     | PN 160                  | 30        | M 42 x 2   | M 42 x 2   | 49        | 20     | 57,0    | 23,5    | 50      |
| XVM NW 25 HS 30-1.5   | S     | PN 160                  | 30        | M 30 x 1,5 | M 42 x 2   | 36        | 16     | 53,0    | 23,5    | 50      |
| XVM NW 25 HS 38-1.5   | S     | PN 160                  | 30        | M 38 x 1,5 | M 42 x 2   | 44        | 16     | 49,0    | 19,5    | 46      |
| XVM NW 32 HS          | S     | PN 160                  | 38        | M 48 x 2   | M 52 x 2   | 55        | 22     | 64,0    | 26,0    | 55      |
| XVM NW 32 HS 38-1.5   | S     | PN 160                  | 38        | M 38 x 1,5 | M 52 x 2   | 49        | 20     | 58,0    | 26,0    | 50      |
| XVM NW 32 HS 45-1.5   | S     | PN 160                  | 38        | M 45 x 1,5 | M 52 x 2   | 55        | 22     | 58,0    | 26,0    | 55      |

Série: LL = muito leve L = leve S = pesada - PN = Pressão nominal PB = Pressão operacional máx. - Ø d2 = diâmetro externo do tubo

## Variantes do produto

|        |                                 |
|--------|---------------------------------|
| XVM VA | Conexão roscada, Aço inoxidável |
| VM     | Conexão roscada, Aço            |