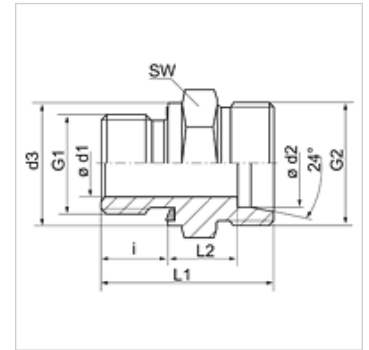


Características

| | |
|------------------------|----------------------------------|
| Conexão 1 | Rosca externa BSP cilíndrica |
| Tipo de vedação 1 | Forma E |
| Conexão 2 | Rosca externa métrica cilíndrica |
| Tipo de vedação 2 | Cone interno 24° |
| Tipo | União macho |
| Modelo | reto |
| Norma | DIN 2353 ISO 8434-1 |
| Escopo de fornecimento | Conexão (sem porca e anilha) |
| Material | Aço |
| Proteção de superfície | com revestimento galvanizado |



Nota

As instruções relativas à montagem e instalação, às cargas de pressão e às temperaturas operacionais admissíveis constam nas Informações Técnicas para Conexões para tubo.

Artigo

| Descrição | Série | Pressão operacional bar | Ø d1 (mm) | Ø d2 (mm) | G1 | G2 | Ø d3 (mm) | i (mm) | L1 (mm) | L2 (mm) | SW (mm) |
|-----------------------|-------|-------------------------|-----------|-----------|------------------|------------|-----------|--------|---------|---------|---------|
| XVR 04 LL ED | LL | PN 100 | - | 4 | Rosca 1/8" -28 | M 8 x 1 | 14 | 8 | 20,0 | 9,5 | 14 |
| XVR 06 LL ED | LL | PN 100 | - | 6 | Rosca 1/8" -28 | M 10 x 1 | 14 | 8 | 20,0 | 8,0 | 14 |
| XVR NW 04 HL ED | L | PN 315 | - | 6 | Rosca 1/8" -28 | M 12 x 1,5 | 14 | 8 | 23,5 | 8,5 | 14 |
| XVR NW 04 HL 1/4 ED | L | PN 315 | - | 6 | Rosca 1/4" -19 | M 12 x 1,5 | 20 | 12 | 29,0 | 10,0 | 19 |
| XVR NW 04 HL 1/2 ED | L | PN 315 | - | 6 | Rosca 1/2" -14 | M 12 x 1,5 | 27 | 14 | 33,0 | 12,0 | 27 |
| XVR NW 04 HL 3/8 ED | L | PN 315 | - | 6 | Rosca 3/8" -19 | M 12 x 1,5 | 22 | 12 | 29,5 | 10,5 | 22 |
| XVR NW 06 HL 1/8 ED | L | PN 315 | - | 8 | Rosca 1/8" -28 | M 14 x 1,5 | 14 | 8 | 24,5 | 9,5 | 14 |
| XVR NW 06 HL ED | L | PN 315 | - | 8 | Rosca 1/4" -19 | M 14 x 1,5 | 19 | 12 | 29,0 | 10,0 | 19 |
| XVR NW 06 HL 3/8 ED | L | PN 315 | - | 8 | Rosca 3/8" -19 | M 14 x 1,5 | 22 | 12 | 30,5 | 11,5 | 22 |
| XVR NW 06 HL 1/2 ED | L | PN 315 | - | 8 | Rosca 1/2" -14 | M 14 x 1,5 | 27 | 14 | 33,0 | 12,0 | 27 |
| XVR NW 08 HL 1/8 ED | L | PN 315 | - | 10 | Rosca 1/8" -28 | M 16 x 1,5 | 14 | 8 | 25,5 | 10,5 | 19 |
| XVR NW 08 HL ED | L | PN 315 | - | 10 | Rosca 1/4" -19 | M 16 x 1,5 | 19 | 12 | 30,0 | 11,0 | 19 |
| XVR NW 08 HL 3/8 ED | L | PN 315 | - | 10 | Rosca 3/8" -19 | M 16 x 1,5 | 22 | 12 | 31,5 | 12,5 | 22 |
| XVR NW 08 HL 1/2 ED | L | PN 315 | - | 10 | Rosca 1/2" -14 | M 16 x 1,5 | 27 | 14 | 34,0 | 13,0 | 27 |
| XVR NW 10 HL 1/4 ED | L | PN 315 | - | 12 | Rosca 1/4" -19 | M 18 x 1,5 | 19 | 12 | 31,5 | 12,5 | 22 |
| XVR NW 10 HL ED | L | PN 315 | - | 12 | Rosca 3/8" -19 | M 18 x 1,5 | 22 | 12 | 31,5 | 12,5 | 22 |
| XVR NW 10 HL 1/2 ED | L | PN 315 | - | 12 | Rosca 1/2" -14 | M 18 x 1,5 | 27 | 14 | 34,0 | 13,0 | 27 |
| XVR NW 10 HL 3/4 ED | L | PN 250 | - | 12 | Rosca 3/4" -14 | M 18 x 1,5 | 32 | 16 | 36,0 | 13,0 | 32 |
| XVR NW 13 HL 3/8 ED | L | PN 315 | - | 15 | Rosca 3/8" -19 | M 22 x 1,5 | 22 | 12 | 33,0 | 14,0 | 27 |
| XVR NW 13 HL ED | L | PN 315 | - | 15 | Rosca 1/2" -14 | M 22 x 1,5 | 27 | 14 | 35,0 | 14,0 | 27 |
| XVR NW 13 HL 3/4 ED | L | PN 250 | - | 15 | Rosca 3/4" -14 | M 22 x 1,5 | 32 | 16 | 38,0 | 15,0 | 32 |
| XVR NW 16 HL 3/8 ED | L | PN 315 | - | 18 | Rosca 3/8" -19 | M 26 x 1,5 | 22 | 12 | 33,5 | 14,0 | 27 |
| XVR NW 16 HL ED | L | PN 315 | - | 18 | Rosca 1/2" -14 | M 26 x 1,5 | 27 | 14 | 36,0 | 14,5 | 27 |
| XVR NW 16 HL 3/4 ED | L | PN 250 | - | 18 | Rosca 3/4" -14 | M 26 x 1,5 | 32 | 16 | 38,0 | 14,5 | 32 |
| XVR NW 20 HL 1/2 ED | L | PN 160 | - | 22 | Rosca 1/2" -14 | M 30 x 2 | 27 | 14 | 38,0 | 16,5 | 32 |
| XVR NW 20 HL ED | L | PN 160 | - | 22 | Rosca 3/4" -14 | M 30 x 2 | 32 | 16 | 40,0 | 16,5 | 32 |
| XVR NW 20 HL 1 ED | L | PN 160 | - | 22 | Rosca 1" -11 | M 30 x 2 | 40 | 18 | 42,0 | 16,5 | 41 |
| XVR NW 25 HL 3/4 ED | L | PN 160 | - | 28 | Rosca 3/4" -14 | M 36 x 2 | 32 | 16 | 41,0 | 17,5 | 41 |
| XVR NW 25 HL ED | L | PN 160 | - | 28 | Rosca 1" -11 | M 36 x 2 | 40 | 18 | 43,0 | 17,5 | 41 |
| XVR NW 25 HL 1 1/4 ED | L | PN 160 | - | 28 | Rosca 1.1/4" -11 | M 36 x 2 | 50 | 20 | 46,0 | 18,5 | 50 |
| XVR NW 32 HL 1 ED | L | PN 160 | - | 35 | Rosca 1" -11 | M 45 x 2 | 40 | 18 | 46,0 | 17,5 | 50 |
| XVR NW 32 HL ED | L | PN 160 | - | 35 | Rosca 1.1/4" -11 | M 45 x 2 | 50 | 20 | 48,0 | 17,5 | 50 |
| XVR NW 32 HL 1 1/2 ED | L | PN 160 | 30 | 35 | Rosca 1.1/2" -11 | M 45 x 2 | 55 | 22 | 52,0 | 19,5 | 55 |
| XVR NW 40 HL 1 1/4 ED | L | PN 160 | - | 42 | Rosca 1.1/4" -11 | M 52 x 2 | 50 | 20 | 50,0 | 19,0 | 55 |
| XVR NW 40 HL ED | L | PN 160 | - | 42 | Rosca 1.1/2" -11 | M 52 x 2 | 55 | 22 | 52,0 | 19,0 | 55 |
| XVR NW 03 HS ED | S | PN 630 | - | 6 | Rosca 1/4" -19 | M 14 x 1,5 | 19 | 12 | 32,0 | 13,0 | 19 |
| XVR NW 03 HS 1/2 ED | S | PN 630 | - | 6 | Rosca 1/2" -14 | M 14 x 1,5 | 27 | 14 | 39,0 | 18,0 | 27 |
| XVR NW 04 HS ED | S | PN 630 | - | 8 | Rosca 1/4" -19 | M 16 x 1,5 | 19 | 12 | 34,0 | 15,0 | 19 |
| XVR NW 04 HS 3/8 ED | S | PN 630 | - | 8 | Rosca 3/8" -19 | M 16 x 1,5 | 22 | 12 | 34,5 | 15,5 | 22 |
| XVR NW 06 HS 1/4 ED | S | PN 630 | - | 10 | Rosca 1/4" -19 | M 18 x 1,5 | 19 | 12 | 34,0 | 14,5 | 22 |



Artigo

| Descrição | Série | Pressão operacional bar | Ø d1 (mm) | Ø d2 (mm) | G1 | G2 | Ø d3 (mm) | i (mm) | L1 (mm) | L2 (mm) | SW (mm) |
|-----------------------|-------|-------------------------|-----------|-----------|------------------|------------|-----------|--------|---------|---------|---------|
| XVR NW 06 HS ED | S | PN 630 | - | 10 | Rosca 3/8" -19 | M 18 x 1,5 | 22 | 12 | 34,5 | 15,0 | 22 |
| XVR NW 06 HS 1/2 ED | S | PN 630 | - | 10 | Rosca 1/2" -14 | M 18 x 1,5 | 27 | 14 | 39,0 | 17,5 | 27 |
| XVR NW 08 HS 1/4 ED | S | PN 630 | - | 12 | Rosca 1/4" -19 | M 20 x 1,5 | 19 | 12 | 36,0 | 16,5 | 22 |
| XVR NW 08 HS ED | S | PN 630 | - | 12 | Rosca 3/8" -19 | M 20 x 1,5 | 22 | 12 | 36,5 | 17,0 | 22 |
| XVR NW 08 HS 1/2 ED | S | PN 630 | - | 12 | Rosca 1/2" -14 | M 20 x 1,5 | 27 | 14 | 39,0 | 17,5 | 27 |
| XVR NW 10 HS 3/8 ED | S | PN 630 | - | 14 | Rosca 3/8" -19 | M 22 x 1,5 | 22 | 12 | 38,5 | 18,5 | 27 |
| XVR NW 10 HS ED | S | PN 630 | - | 14 | Rosca 1/2" -14 | M 22 x 1,5 | 27 | 14 | 41,0 | 19,0 | 27 |
| XVR NW 10 HS 3/4 ED | S | PN 630 | - | 14 | Rosca 3/4" -14 | M 22 x 1,5 | 32 | 16 | 45,0 | 21,0 | 32 |
| XVR NW 13 HS 3/8 ED | S | PN 400 | - | 16 | Rosca 3/8" -19 | M 24 x 1,5 | 22 | 12 | 38,5 | 18,0 | 27 |
| XVR NW 13 HS ED | S | PN 400 | - | 16 | Rosca 1/2" -14 | M 24 x 1,5 | 27 | 14 | 41,0 | 18,5 | 27 |
| XVR NW 13 HS 3/4 ED | S | PN 400 | - | 16 | Rosca 3/4" -14 | M 24 x 1,5 | 32 | 16 | 45,0 | 20,5 | 32 |
| XVR NW 13 HS 1 ED | S | PN 400 | - | 16 | Rosca 1" | M 24 x 1,5 | 39 | 18 | 45,5 | 18,8 | 41 |
| XVR NW 16 HS 1/2 ED | S | PN 400 | - | 20 | Rosca 1/2" -14 | M 30 x 2 | 27 | 14 | 45,0 | 20,5 | 32 |
| XVR NW 16 HS ED | S | PN 400 | - | 20 | Rosca 3/4" -14 | M 30 x 2 | 32 | 16 | 47,0 | 20,5 | 32 |
| XVR NW 16 HS 1 ED | S | PN 400 | - | 20 | Rosca 1" -11 | M 30 x 2 | 40 | 18 | 51,0 | 22,5 | 41 |
| XVR NW 20 HS 1/2 ED | S | PN 400 | - | 25 | Rosca 1/2" -14 | M 36 x 2 | 27 | 14 | 49,0 | 23,0 | 41 |
| XVR NW 20 HS 3/4 ED | S | PN 400 | - | 25 | Rosca 3/4" -14 | M 36 x 2 | 32 | 16 | 51,0 | 23,0 | 41 |
| XVR NW 20 HS ED | S | PN 400 | - | 25 | Rosca 1" -11 | M 36 x 2 | 40 | 18 | 53,0 | 23,0 | 41 |
| XVR NW 25 HS 1 ED | S | PN 400 | - | 30 | Rosca 1" -11 | M 42 x 2 | 40 | 18 | 55,0 | 23,5 | 50 |
| XVR NW 25 HS ED | S | PN 400 | - | 30 | Rosca 1.1/4" -11 | M 42 x 2 | 50 | 20 | 57,0 | 23,5 | 50 |
| XVR NW 32 HS 1 1/4 ED | S | PN 315 | - | 38 | Rosca 1.1/4" -11 | M 52 x 2 | 50 | 20 | 62,0 | 26,0 | 55 |
| XVR NW 32 HS ED | S | PN 315 | - | 38 | Rosca 1.1/2" -11 | M 52 x 2 | 55 | 22 | 64,0 | 26,0 | 55 |

Série: LL = muito leve L = leve S = pesada - PN = Pressão nominal PB = Pressão operacional máx. - Ø d2 = diâmetro externo do tubo

Variantes do produto

| | |
|-----------|---------------------------------|
| XVR ED VA | Conexão roscada, Aço inoxidável |
| VR ED | Conexão roscada, Aço |

Acessório para

| | |
|----|--|
| WD | Vedação em elastômero para conexões ED |
|----|--|