

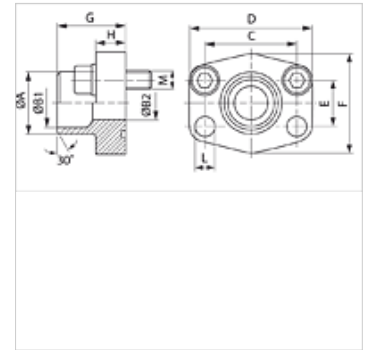
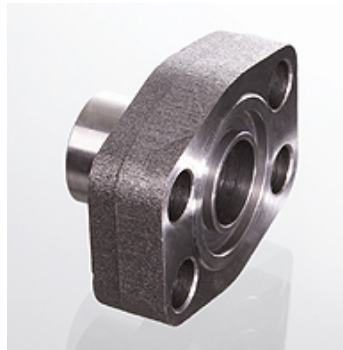
# AFS SRE (3000 PSI)

Flange soldável macho SAE

**HANSA FLEX**

## Características

Série de pressão	3000 psi
Norma	SAE J 518 C ISO 6162
Modelo	reto
Tipo	Colar soldável SAE
Fixação	Furo para parafuso
Escopo de fornecimento	apenas flange
Material	S355J2G3 (ST52.3)
Proteção de superfície	preto oleado



## Nota

A pressão operacional máxima indicada refere-se ao flange! A pressão operacional efetiva é determinada pelo tubo (espessura da parede) e pela qualidade do tubo!

Os parafusos recomendados estão listados nas colunas M (metr) ou M (unc).

## Artigo

Descrição	PB 10.9 (bar)	Tamanho	Tubo	A (mm)	B1 (mm)	B2 (mm)	G (mm)	C (mm)	E (mm)	H (mm)	L (mm)	M métr.	M unc
AFS 80 SRE 20	350	1/2"	20 x 3	20	14,0	14	35,0	38,1	17,5	16,0	9,0	M 8 x 30	5/16" x 1.1/4"
AFS 80 SRE 22	350	1/2"	22 x 3	22	16,0	13	35,0	38,1	17,5	16,0	9,0	M 8 x 30	5/16" x 1.1/4"
AFS 100 SRE 25	350	3/4"	25 x 3	25	19,0	19	36,0	47,6	22,2	18,0	11,0	M 10 x 35	3/8" x 1.1/2"
AFS 100 SRE 28	350	3/4"	28 x 3	28	21,5	19	36,0	47,6	22,2	18,0	11,0	M 10 x 35	3/8" x 1.1/2"
AFS 102 SRE 30	315	1"	30 x 4	30	22,0	22	38,0	52,4	26,2	18,0	11,0	M 10 x 35	3/8" x 1.1/2"
AFS 102 SRE 35	315	1"	35 x 4	35	27,0	25	38,0	52,4	26,2	18,0	11,0	M 10 x 35	3/8" x 1.1/2"
AFS 104 SRE 38	250	1.1/4"	38 x 4	38	30,0	30	41,0	58,7	30,2	21,0	11,5	M 10 x 40	7/16" x 1.1/2"
AFS 104 SRE 42	250	1.1/4"	42 x 3	43	36,0	31	41,0	58,7	30,2	21,0	11,5	M 10 x 40	7/16" x 1.1/2"
AFS 106 SRE 38	200	1.1/2"	38 x 4	38	30,0	30	44,0	69,9	35,7	25,0	13,5	M 12 x 45	1/2" x 1.3/4"
AFS 106 SRE 42	200	1.1/2"	42 x 3	42	36,0	36	44,0	69,9	35,7	25,0	13,5	M 12 x 45	1/2" x 1.3/4"
AFS 106 SRE 48.3	200	1.1/2"	48,3 x 4,5	49	38,0	38	44,0	69,9	35,7	25,0	13,5	M 12 x 45	1/2" x 1.3/4"
AFS 108 SRE 60	200	2"	60,3 x 5,6	61	49,0	49	45,0	77,8	42,9	25,0	13,5	M 12 x 45	1/2" x 1.3/4"
AFS 110 SRE 76	160	2.1/2"	76,1 x 7,1	77	62,0	62	50,0	88,9	50,8	25,0	13,5	M 12 x 45	1/2" x 1.3/4"
AFS 112 SRE 76	160	3"	76,1 x 7,1	77	62,0	62	51,0	106,4	61,9	26,0	17,5	M 16 x 50	5/8" x 2"

PN = Pressão nominal PB = Pressão operacional máx.

## Variantes do produto

AFS SRE M (3000 / 6000 PSI) Flange soldável macho SAE, com jogo de parafusos métricos e O-ring

AFS SRE U (3000 / 6000 PSI) Flange soldável macho SAE, com jogo de parafusos UNC e O-ring