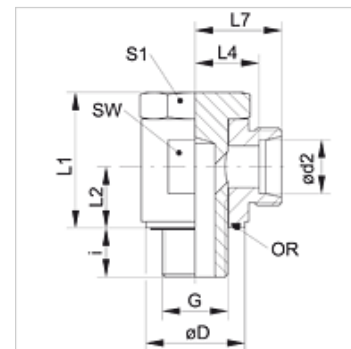


Características

Conexão 1	Rosca externa BSP cilíndrica
Tipo de vedação 1	Forma E
Conexão 2	Rosca externa métrica cilíndrica
Tipo de vedação 2	Cone interno 24°
Tipo	União orientável sem estrangulamento
Modelo	Ângulo de 90°
Norma	DIN 2353 ISO 8434-1
Escopo de fornecimento	Conexão (sem porca e anilha)
Material	Aço
Proteção de superfície	com revestimento galvanizado



Nota

As instruções relativas à montagem e instalação, às cargas de pressão e às temperaturas operacionais admissíveis constam nas Informações Técnicas para Conexões para tubo.

Artigo

Descrição	Série	Pressão operacional bar	Ø d2 (mm)	G	Ø D (mm)	i (mm)	L1 (mm)	L2 (mm)	L4 (mm)	L7 (mm)	SW (mm)	S1	OR
XSDOR 04 LL	LL	PN 100	4	Rosca 1/8" -28	14,5	8,0	23,5	10,5	14,0	18,0	17	17	7,65 x 1,78
XSDOR 06 LL	LL	PN 100	6	Rosca 1/8" -28	14,5	8,0	23,5	10,5	13,5	19,0	17	17	7,65 x 1,78
XSDOR 08 LL	LL	PN 100	8	Rosca 1/8" -28	14,5	8,0	23,5	10,5	13,5	19,0	17	17	7,65 x 1,78
XSDOR NW 04 HL	L	PN 315	6	Rosca 1/8" -28	14,0	8,0	24,0	10,5	12,0	19,0	17	17	7,65 x 1,78
XSDOR NW 06 HL	L	PN 315	8	Rosca 1/4" -19	18,0	12,0	30,0	14,0	14,5	21,5	22	19	11,10 x 1,78
XSDOR NW 08 HL	L	PN 315	10	Rosca 1/4" -19	18,0	12,0	30,0	14,0	15,5	22,5	22	19	11,10 x 1,78
XSDOR NW 10 HL 1/4	L	PN 315	12	Rosca 1/4" -19	19,0	12,0	34,0	16,5	18,0	25,0	27	19	11,10 x 1,78
XSDOR NW 10 HL	L	PN 315	12	Rosca 3/8" -19	22,0	12,0	36,0	16,5	18,0	25,0	27	24	14,00 x 1,78
XSDOR NW 10 HL 1/2	L	PN 315	12	Rosca 1/2" -14	27,0	14,0	46,0	21,5	20,5	27,5	32	27	18,77 x 1,78
XSDOR NW 13 HL	L	PN 315	15	Rosca 1/2" -14	26,0	12,0	45,0	21,5	21,5	28,5	32	30	18,77 x 1,78
XSDOR NW 16 HL	L	PN 315	18	Rosca 1/2" -14	26,0	14,0	45,0	21,5	21,0	28,5	32	30	18,77 x 1,78
XSDOR NW 20 HL	L	PN 160	22	Rosca 3/4" -14	32,0	16,0	53,0	24,0	27,5	35,0	41	36	23,81 x 2,62
XSDOR NW 25 HL	L	PN 160	28	Rosca 1" -11	39,0	18,0	66,0	30,5	32,0	39,5	50	46	29,82 x 2,62
XSDOR NW 32 HL	L	PN 160	35	Rosca 1.1/4" -11	49,0	20,0	76,0	35,5	36,0	46,5	60	55	37,77 x 2,62
XSDOR NW 40 HL	L	PN 160	42	Rosca 1.1/2" -11	55,0	22,0	87,0	40,5	40,5	51,5	70	60	41,28 x 3,53
XSDOR NW 03 HS	S	PN 400	6	Rosca 1/4" -19	18,0	12,0	30,0	14,0	16,5	23,5	22	19	11,10 x 1,78
XSDOR NW 04 HS	S	PN 400	8	Rosca 1/4" -19	18,0	12,0	30,0	14,0	16,5	23,5	22	19	11,10 x 1,78
XSDOR NW 06 HS	S	PN 400	10	Rosca 3/8" -19	22,0	12,0	36,0	16,5	18,5	26,0	27	24	14,00 x 1,78
XSDOR NW 08 HS	S	PN 400	12	Rosca 3/8" -19	22,0	12,0	36,0	16,5	18,5	26,0	27	24	14,00 x 1,78
XSDOR NW 10 HS	S	PN 400	14	Rosca 1/2" -14	26,0	14,0	45,0	21,5	22,5	30,5	32	30	18,77 x 1,78
XSDOR NW 13 HS	S	PN 315	16	Rosca 1/2" -14	26,0	14,0	45,0	21,5	22,0	30,5	32	30	18,77 x 1,78
XSDOR NW 16 HS	S	PN 315	20	Rosca 3/4" -14	32,0	16,0	53,0	24,0	26,5	37,0	41	36	23,81 x 2,62
XSDOR NW 20 HS	S	PN 250	25	Rosca 1" -11	39,0	18,0	66,0	30,5	31,5	43,5	50	46	29,82 x 2,62
XSDOR NW 25 HS	S	PN 160	30	Rosca 1.1/4" -11	49,0	20,0	76,0	35,5	37,0	50,5	60	55	37,77 x 2,62
XSDOR NW 32 HS	S	PN 160	38	Rosca 1.1/2" -11	55,0	22,0	87,0	40,5	41,5	57,5	70	60	41,28 x 3,53

PN = Pressão nominal PB = Pressão operacional máx. - Série: LL = muito leve L = leve S = pesada - Ø = diâmetro externo do tubo

Variantes do produto

XSDOR VA	União orientável, sem estrangulamento, ângulo 90°, Aço inoxidável
SDOR	União orientável, sem estrangulamento, ângulo 90°, Aço