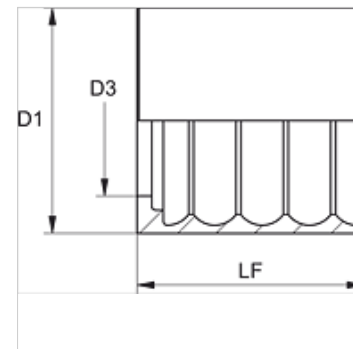
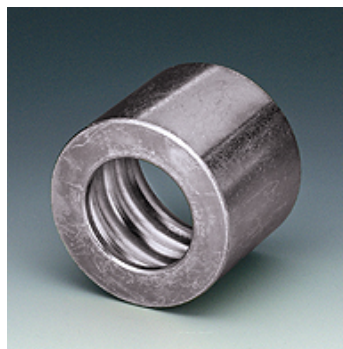


PSG 100 RI

Capa para prensar, R 4

Características

| | |
|------------------------|------------------------------|
| Capa reusável | sem descasque (no skive) |
| Material | Aço |
| Proteção de superfície | com revestimento galvanizado |



Artigo

| Descrição | DN* | Tamanho | Polegada | D1 (mm) | D3 (mm) | LF (mm) |
|------------|-----|---------|----------|------------|------------|------------|
| PSG 150 RI | 51 | 32 | 2" | 73,0 | 57,2 | 70,0 |
| PSG 160 RI | 60 | 38 | 2.1/2" | 85,0 | 69,5 | 80,0 |
| PSG 176 RI | 76 | 48 | 3" | 105,0 | 84,0 | 80,0 |
| PSG 190 RI | 90 | 56 | 3.1/2" | - | - | - |

DN = diâmetro nominal