

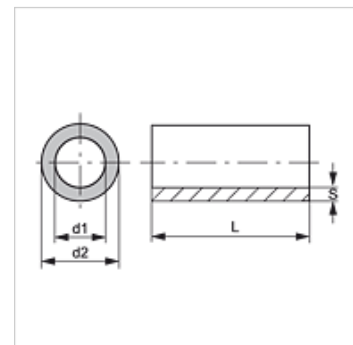
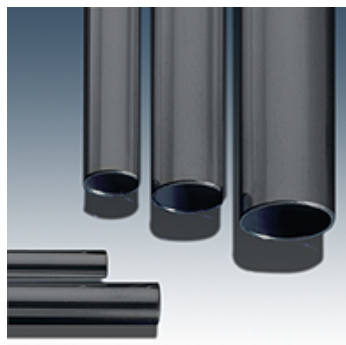
PR ST52 (M)

Hydraulic tube, metric, ST52

Características

Tipo Tubo de precisão em aço

Material Aço ST 52



Artigo

| Descrição | Ø d2 (mm) | Ø d1 (mm) | S (mm) |
|---------------------|--------------|--------------|-----------|
| PR 65-8 ST52 | 65,0 | 49,0 | 8,00 |
| PR 60-7 ST52 | 60,0 | 56,0 | 7,00 |

L = comprimento do tubo, aprox. 6 metros