

K-STROEV AG UNTEN

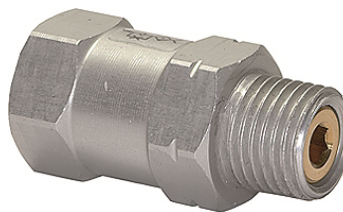
Check valves, male thread at bottom

HANSA FLEX

Características

Tipo Ball seat valve (ball in brass seat)

Carcaça Aluminium



Nota

Outras indicações a pedido.

Descrição

Check valves close the vacuum line if the suction pad is not covered, thus maintaining the vacuum. The valves are protected against dirt by a replaceable sieve. This valve series is suitable for all suction pads in our standard range.

Artigo

Descrição	Rosca 1	Rosca 2	Comprimento (mm)
K- 07 45 01 55	G 1/8 female	G 1/8 male	26,0
K- 07 45 01 54	G 1/4 female	G 1/4 male	26,0
K- 07 45 01 53	G 1/2 female	G 1/2 male	29,0