

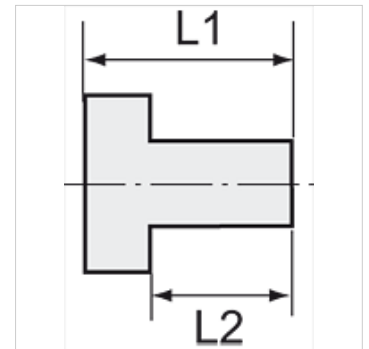
K-RD NIPPEL 6 KT

Reducing nipples, hexagonal

HANSA FLEX

Características

| | |
|---------------------|------------------------------|
| Pressão de trabalho | Max. 20 bar |
| Rosca externa | Parallel to DIN EN ISO 228-1 |
| Rosca interna | Parallel to DIN EN ISO 228-1 |
| Material | Aço inoxidável 1.4408 |



Nota

The dimensions of the standard screw fittings may change slightly during the life of the catalogue as a result of optimisation processes. Outras indicações a pedido.

Artigo

| Descrição | Rosca externa | Rosca interna | L1 (mm) | L2 (mm) | SW |
|----------------|---------------|---------------|------------|------------|-------|
| K- 07 40 15 51 | G 1/4 | G 1/8 | 18,1 | 14,0 | 17 mm |
| K- 07 40 15 52 | G 3/8 | G 1/8 | 19,0 | 12,9 | 21 mm |
| K- 07 40 15 53 | G 3/8 | G 1/4 | 19,0 | 13,0 | 21 mm |
| K- 07 40 15 54 | G 1/2 | G 1/4 | 22,0 | 15,6 | 25 mm |
| K- 07 40 15 55 | G 1/2 | G 3/8 | 24,7 | 16,0 | 26 mm |
| K- 07 40 15 56 | G 3/4 | G 3/8 | 25,0 | 15,8 | 30 mm |
| K- 07 40 15 57 | G 3/4 | G 1/2 | 25,0 | 15,9 | 31 mm |
| K- 07 40 15 58 | G 1 | G 1/2 | 29,0 | 20,0 | 37 mm |
| K- 07 40 15 59 | G 1 | G 3/4 | 29,0 | 20,0 | 38 mm |
| K- 07 40 15 60 | G 1 1/4 | G 3/4 | 30,0 | 22,4 | 46 mm |
| K- 07 40 15 61 | G 1 1/4 | G 1 | 30,0 | 22,2 | 46 mm |
| K- 07 40 15 62 | G 1 1/2 | G 1 | 32,0 | 23,0 | 53 mm |
| K- 07 40 15 63 | G 1 1/2 | G 1 1/4 | 32,0 | 23,0 | 53 mm |
| K- 07 40 15 64 | G 2 | G 1 | 36,0 | 26,0 | 63 mm |
| K- 07 40 15 65 | G 2 | G 1 1/2 | 36,0 | 26,0 | 63 mm |