

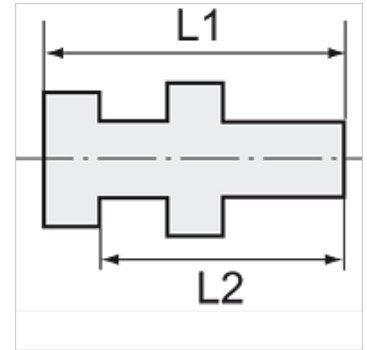
# K-SV VALUE LINE MS NI

Bulkhead connectors

**HANSA FLEX**

## Características

pressão operacional máx.	60 bar
temperatura de serviço máx.	150 °C
Material	Latão niquelado



## Nota

The dimensions of the standard screw fittings may change slightly during the life of the catalogue as a result of optimisation processes.  
Outras indicações a pedido.

## Descrição

For air, water, steam, oil, etc.

## Artigo

Descrição	Rosca externa	Rosca interna	L1 (mm)	L2 (mm)	SW1 (mm)	SW2 (mm)
K- 07 40 34 35	M 16 x 1.5	G 1/8	18,0	14,0	19	22
K- 07 40 34 36	M 20 x 1.5	G 1/4	25,0	21,0	24	27
K- 07 40 34 37	M 26 x 1.5	G 3/8	26,0	21,0	30	32
K- 07 40 34 38	M 28 x 1.5	G 1/2	33,0	27,0	32	36