

# K-HS ALU BLAU

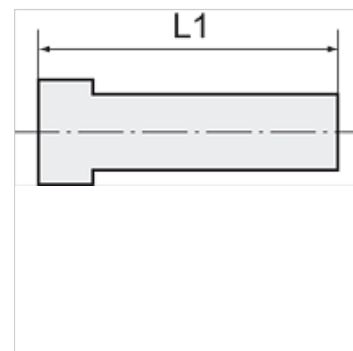
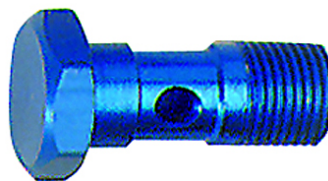
Aluminium banjo bolts

**HANSA FLEX**

## Características

Pressão operacional 0 - 10 bar

Faixa de temperatura -10 °C to +60 °C



## Nota

Outras indicações a pedido.

## Artigo

| Descrição      | Rosca | L1<br>(mm) | SW    |
|----------------|-------|------------|-------|
| K- 07 40 33 45 | G 1/8 | 27,0       | 14 mm |
| K- 07 40 33 46 | G 1/4 | 29,0       | 17 mm |