

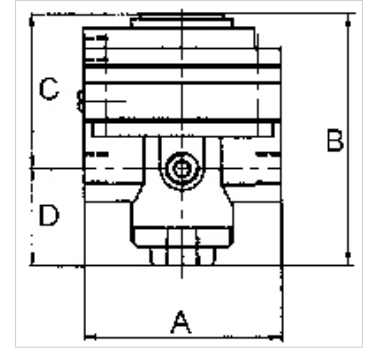
K-PRAEZI DRUCKREGL PNEU FERN

Precision pressure regulators

HANSA FLEX

Características

Pressão de entrada	Max. 16 bar
Temperatura do fluido	max. 60 °C
Temperatura ambiente	Max. 60 °C
Fluidos	Micro-filtered, unoiled compressed air (0.01 µm)
Conexão manômetro	G 1/4
Fluxo	3000 l/min
Conexão de purga	G 3/8 (for mounting a silencer)
Pressão de controle	Max. 10 bar
Conexão de ar de controle	G 1/8
Material de vedação	NBR
Carcaça	Die-cast zinc, painted black
Consumo de ar próprio	6 l/min at Pin = 16 bar



Nota

Attention! A set of wearing parts cannot be supplied! These pressure regulators may only be opened in the factory! The given flow rates are based on the following parameters: 3000 l/min: P1: 5 bar, P2: 3 bar, $\Delta p \leq 0,1$ bar.

Outras indicações a pedido.

Descrição

With high flow rate and large secondary relief port. Pneumatically controlled diaphragm pressure regulators with large secondary relief port for applications requiring an extremely accurate working pressure, especially at high flow rates. We recommend our »multifix« series of pilot controllers.

Informações adicionais

1500 l/min: P1: 10 bar, P2: 7 bar, $\Delta p \leq 0,1$ bar.

Artigo

Descrição	Rosca	Faixa de regulagem	A (mm)	B	C (mm)	D (mm)
K- 07 25 09 35	G 1/2	0.05 - 7 bar (max. 10 bar)	82,0	108,0 mm	64,5	43,5

Acessório para

K-HALTERBAUSATZ STANDARD	Holder
K-KM MS	Hexagonal lock nuts, brass
K-SCHALLDAEPFER VYON	Vyon silencers
K-FILTERELEMENT	Filter element
K-XV AGM 2	Double nipples, parallel male thread