

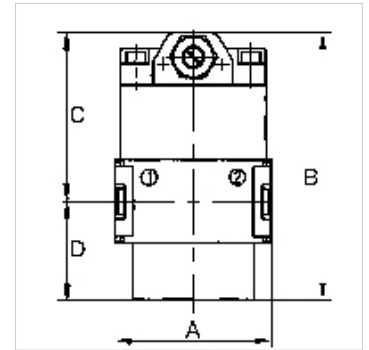
K-ANFAV MULTIFIX MINI

Start-up valves

HANSA FLEX

Características

Pressão de entrada	Min. 2.5 bar, max. 16 bar
Temperatura do fluido	max. 60 °C
Temperatura ambiente	Max. 60 °C
Fluxo	1600 l/min
Material de vedação	NBR
Carcaça	Die-cast zinc
Medição do valor de fluxo	At P1 = 6 bar and pressure drop $\Delta p = 1$ bar



Nota

If several devices in the »multifix-mini« Series are assembled together, the maximum working pressure is 12 bar.
Outras indicações a pedido.

Descrição

Seat valves operated by secondary pressure for controlled pressurisation of pneumatic systems. The full cross-section of the regulator is opened at 50% of the input pressure. With adjustable restrictor!

Artigo

Descrição	Rosca	A (mm)	B	C (mm)	D (mm)
K- 07 25 11 53	G 1/4	45,0	77,5 mm	48,5	29,0

Acessórios

K-HALTERBAUSATZ Holder

Acessório para

K-KOPPELPAKET MEHR Coupling packet