

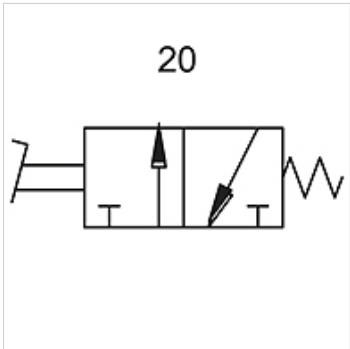
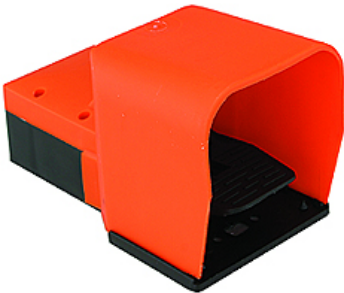
K-WFV 3/2 NICHT RASTEND FUS

3/2-way foot-operated valves (monostable, non-latching, with foot guard)



Características

| | |
|-------------------------------|---|
| Pressão operacional | 2.5 - 10 bar |
| Faixa de temperatura | -10 °C to +60 °C |
| Fluxo com 6,3 bar e Δ 0,5 bar | 60 NI/min (4 mm and M5), 640 NI/min (G 1/4) |
| Fluxo com 6,3 bar e Δ 1 bar | 95 NI/min (4 mm and M5), 840 NI/min (G 1/4) |



Nota

Outras indicações a pedido.

Descrição

Foot-operated valves, 3/2- and 5/2-way types, bistable or monostable (non-latching).

Artigo

| Descrição | Conexão | Número do diagrama de conexões |
|----------------|---------|--------------------------------|
| K- 07 15 00 19 | M 5 | 20 |
| K- 07 15 00 20 | 4 mm | 20 |