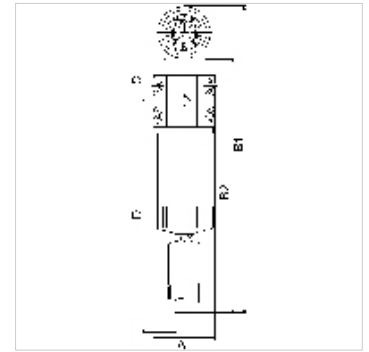


# K-VORFILTER O MANO

## Pre-filters without differential pressure gauge

### Características

<b>Pressão de entrada</b>	Min. 4 bar, Max. 16 bar
<b>Área de exibição Manômetro de pressão diferencial</b>	0 - 2 bar
<b>Carcaça, reservatório do filtro</b>	Aluminium
<b>Temperatura ambiente</b>	+5 °C to +60 °C
<b>Unidade filtrante</b>	2,00 µm
<b>Separação de partículas</b>	2 µm
<b>Grau de eficiência</b>	99.99 %
<b>Elemento do filtro</b>	Polyethylene (with 45% cavity)
<b>Medição do valor de fluxo</b>	At P1 = 6 bar and pressure drop $\Delta p$ = 0.5%



### Nota

Outras indicações a pedido.

### Descrição

Suitable for all applications where the standard centrifugal separators do not afford the desired efficiency. The pre-filters and micro-filters are equipped with an automatic drain valve. All devices can be supplied with or without a differential pressure gauge. The differential pressure gauge indicates the degree of contamination of the filter element as a function of the pressure drop.

### Artigo

Descrição	Rosca	Fluxo (L/min)	A (mm)	B2 (mm)	C (mm)	D (mm)
K- 07 25 12 94	G 1/4	1000	82,5	338,0	57,0	353,0
K- 07 25 12 95	G 3/8	1000	82,5	338,0	57,0	353,0
K- 07 25 12 96	G 1/2	1000	82,5	338,0	57,0	353,0
K- 07 25 12 97	G 3/4	2000	82,5	408,0	57,0	493,0
K- 07 25 12 98	G 1	3000	118,0	423,0	72,0	458,0
K- 07 25 12 99	G 1 1/4	5300	118,0	523,0	72,0	658,0
K- 07 25 13 00	G 1 1/2	8300	118,0	623,0	72,0	858,0
K- 07 25 13 01	G 2	13000	118,0	813,0	72,0	1238,0

### Acessório para

<b>K-FILTERELEMENT SONDER</b>	Filter element
<b>K-VERBINDUNGSELEMENTE SOND</b>	Connecting sets
<b>K-HALTERBAUSATZ</b>	Holder
<b>K-AUTOMAT ABLASSVENTIL</b>	Automatic drain valve