

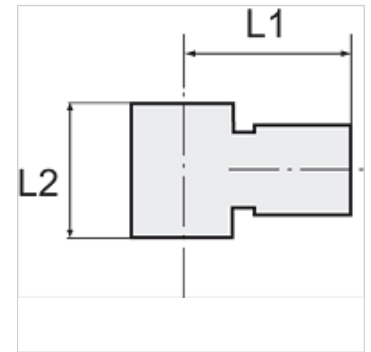
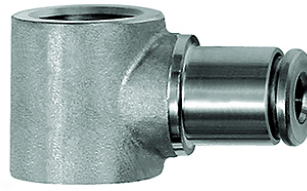
# K-L-RINGSTUECK

Ring nipples, single

**HANSA FLEX**

## Características

Pressão de trabalho pulsante	Max. 10 bar
Pressão	Max. 15 bar (depending on pipe quality)
Material do tubo adequado	PVDF, PTFE, stainless steel, PA, PU
Norma	Rosca BSP conforme DIN EN ISO 228-1
Temperatura ambiente	-20 °C to max. +150 °C (depending on pipe quality and diameter)
Material	Aço inoxidável 1.4404
Material de vedação	FKM



## Nota

Outras indicações a pedido.

## Descrição

For use with aggressive media and in areas with corrosive outside influences, in the food processing industry and in hygienic and sanitary applications.

## Artigo

Descrição	Rosca	para Ø externo da mangueira	L1 (mm)	L2 (mm)
K- 07 40 47 10	G 1/8	4 mm	19,5	15,0
K- 07 40 47 11	G 1/8	6 mm	22,0	15,0
K- 07 40 47 12	G 1/8	8 mm	22,5	15,0
K- 07 40 47 08	G 1/4	6 mm	23,5	17,0
K- 07 40 47 09	G 1/4	8 mm	24,0	17,0
K- 07 40 47 07	G 1/4	10 mm	27,0	17,0
K- 07 40 47 13	G 3/8	10 mm	29,0	20,0
K- 07 40 47 14	G 3/8	12 mm	31,0	20,0
K- 07 40 47 06	G 1/2	12 mm	33,0	24,0