

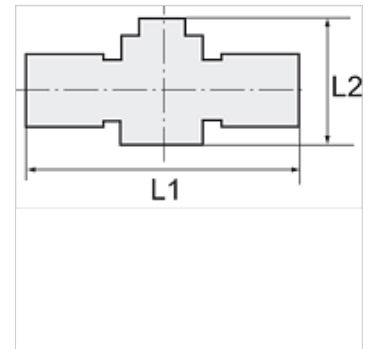
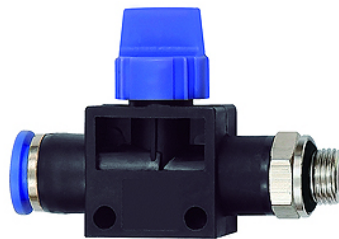
K-WV 3/2 STECK GEW SCHL

3/2-way pilot valves with male thread and plug connection, flow direction from port to tube, parallel male thread with O-ring

HANSA FLEX

Características

Pressão de trabalho	Max. 15 bar, coarse vacuum
Campo de aplicação	Ar, Vácuo
Mangueiras recomendadas	PU or PA (nylon)
Fluidos	Compressed air and all gases or liquids that are compatible with the materials
Faixa de temperatura	-20 °C to +80 °C
Área de vedação	Parallel version: O-ring in housing, Conical version: thread coating
Material	Polímero e latão niquelado
Anel de pressão	Plastic



Nota

Outras indicações a pedido.

Descrição

Push-in fittings series manufactured in plastic and nickel-plated brass. All parts are suitable for use with hoses, tubes or pipes made of plastic and copper.

Artigo

Descrição	Rosca	para Ø externo da mangueira	L1 (mm)	L2 (mm)	SW
K- 07 40 43 85	G 1/8	6 mm	58,1	41,5	14 mm
K- 07 40 43 86	G 1/8	8 mm	58,5	41,5	14 mm
K- 07 40 43 83	G 1/4	6 mm	59,6	41,5	14 mm
K- 07 40 43 84	G 1/4	8 mm	60,0	41,5	17 mm
K- 07 40 43 81	G 1/4	10 mm	70,9	46,0	17 mm
K- 07 40 43 82	G 1/4	12 mm	70,9	46,0	21 mm
K- 07 40 43 89	G 3/8	6 mm	61,1	41,5	14 mm
K- 07 40 43 90	G 3/8	8 mm	61,5	41,5	17 mm
K- 07 40 43 87	G 3/8	10 mm	72,4	46,0	20 mm
K- 07 40 43 88	G 3/8	12 mm	71,9	46,0	21 mm
K- 07 40 43 79	G 1/2	10 mm	74,9	46,0	24 mm
K- 07 40 43 80	G 1/2	12 mm	75,4	46,0	24 mm