

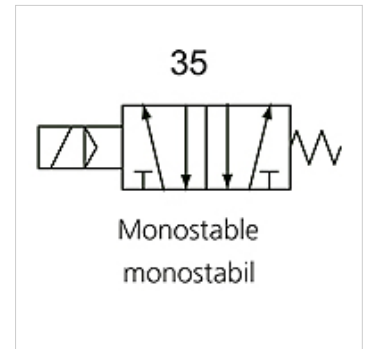
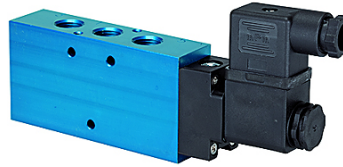
K-WV 5/2 EINS ELEKTRO

5/2-way spool valves, single solenoid

HANSA FLEX

Características

Função	5/2-way
Pressão operacional	2.5 - 10 bar; Max. vacuum 10 bar (external pilot air)
Pressão de trabalho mín.	2,5 bar
Faixa de temperatura	-10 °C to +60 °C
Fluxo 6bar e 10bar	1500 NI/min (G 1/4), 4600 NI/min (G 1/2)
Conexão elétrica	Coupler plug PG 9 - form B
Tipo de proteção	IP 65 (DIN 46244)
Carcaça	Anodised aluminium, blue
Válvula de ponteiro	Stainless steel
Material de vedação	NBR



Nota

Outras indicações a pedido.

Descrição

This valve design, featuring the Tapered Tee Seal®, offers the ability to run without lubrication and supports almost any compressed air quality. The valves are largely resistant to dirt and can thus also be used under extreme conditions without any problems. Leakage is now a thing of the past and the spool no longer sticks, even after long idle periods.

Artigo

Descrição	Conexão	Tensão	DN	Número do diagrama de conexões	Comando
K- 07 15 02 21	G 1/4	24 V DC	8	35	
K- 07 15 02 22	G 1/2"	24 V DC	15	35	
K- 07 15 02 23	G 1/4	230 V AC, 50 Hz	8	35	
K- 07 15 02 24	G 1/2"	230 V AC, 50 Hz	15	35	