

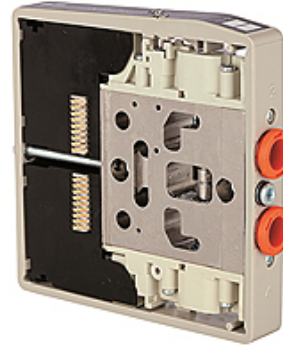
# K-VENTILSCHEIBE HDM 8

Valve discs for HDM valve terminal with 8 mm port

**HANSA FLEX**

## Características

<b>Fluidos</b>	Filtered, unlubricated or lubricated compressed air. If lubrication is used, it must be continuous.
<b>Pressão de trabalho</b>	Max. vacuum 10 bar (external pilots), 3 to 7 bar (internal pilots as standard)
<b>Pressão de controle</b>	3 - 7 bar
<b>Faixa de temperatura</b>	-10 °C to +60 °C
<b>Fluxo</b>	200 NI/min (Ø 4), 500 NI/min (Ø 6), 800 NI/min (Ø 8)
<b>Número de acionamentos</b>	Max. 16 (e.g. 16 spring return valves)
<b>Acionamento auxiliar manual</b>	Latching (bistable), Monostable (non-latching) version also available on request
<b>Consumo de potência</b>	0.6 W per pilot
<b>Tipo de proteção</b>	IP 65



## Nota

Outras indicações a pedido.

## Descrição

These compact valve terminals, with a maximum flow rate of 800 NI/min, can be individually adapted to the specific conditions of each application thanks to the wide range of functions and various input and intermediate plates. Since each valve terminal is a customer-specific combination of a series of individual elements, the catalogue only lists the available input, intermediate and end plates as well as the different valve discs and the 25-pin multi-pole connectors.

## Informações adicionais

Important: The scope of supply does not include a connector. Please order separately.

## Artigo

Descrição	Função
K- 07 15 20 69	2 x 3/2-way, NC, monostable or 5/3-way, mid-position exhausted
K- 07 15 20 72	2 x 3/2-way, NO, monostable or 5/3-way, mid-position pressurised
K- 07 15 20 63	3/2-way, NC, monostable and 3/2-way, NO, monostable
K- 07 15 20 71	5/2-way, monostable
K- 07 15 20 68	5/2-way, monostable (uses only one pin, two signals assigned)
K- 07 15 20 70	5/2-way, bistable (pulse valve)
K- 07 15 20 65	5/3-way, mid-position closed