

# K-RD STUECKE PP

Reducers

**HANSA FLEX**

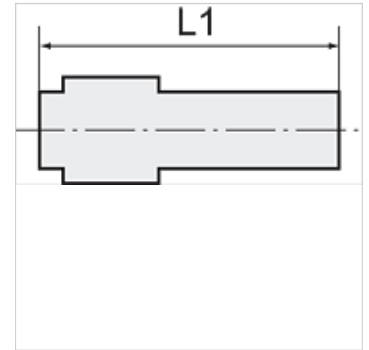
## Características

Pressão de trabalho on request

Temperatura operacional Max. +20 °C

Material Polipropileno (PP)

Material de vedação NBR



## Nota

Outras indicações a pedido.

## Descrição

Lightweight, push-in fittings distinguished by high strength, toughness, resistance to abrasion and impact resistance - ideal for a wide range of applications. Plastic and metal tubes are connected together quickly and easily. Suitable for compressed air or liquids, with good resistance to a large number of chemicals.

## Artigo

Descrição	para Ø externo da mangueira	L1 (mm)	Bocal (mm)
K- 07 40 29 00	22 mm	127,0	32
K- 07 40 29 01	28 mm	133,3	32