

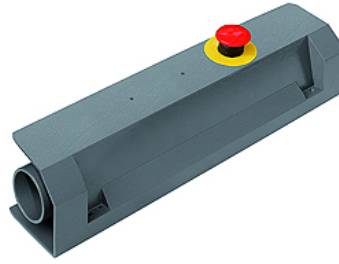
# K-ZWEIHAND S KONSOLE KOMPL

Complete pushbutton panel

**HANSA FLEX**

## Características

Fluidos	Filtered, unlubricated compressed air
Pressão operacional	2.5 - 8 bar
Faixa de temperatura	-10 °C to +60 °C
Conexão	Push-in fitting for pipe 4 mm
Acionamento	Pneumatic
Quantidade de fluxo de ar 6bar	85 NI/min
Atraso temporal máx. Sinal de entrada	0,4 s



## Nota

Outras indicações a pedido.

## Descrição

This pushbutton panel according to EN574 Type III A is comprised of a dual manual control valve with a housing and manifold. The valve only generates an output signal if two synchronised input signals are received within < 0.4 sec. If one input signal is interrupted, the output signal is interrupted as well. An emergency stop valve with a mushroom pushbutton is included. The housing can be screwed to the wall in any position. The valve manifold can optionally be supplied without the housing and with a DIN bar adapter. Applications: Two-hand safety valve for start-of-cycle control on a pneumatically operated machine.

## Artigo

Descrição	Definição
K- 07 15 26 08	Complete pushbutton panel with safety valve