

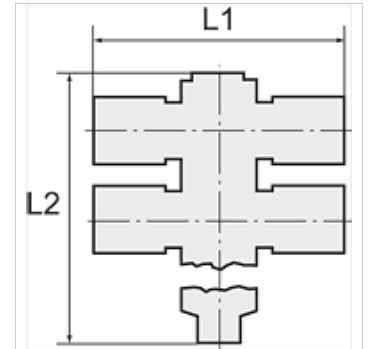
# K-T-MEHRF-VERT 4 DREH

Tee distributors with inner hex, 4 outlets, swivel type, parallel male thread with O-ring

**HANSA FLEX**

## Características

<b>Pressão de trabalho</b>	Max. 15 bar, coarse vacuum
<b>Campo de aplicação</b>	Ar, Vácuo
<b>Mangueiras recomendadas</b>	PU or PA (nylon)
<b>Fluidos</b>	Compressed air and all gases or liquids that are compatible with the materials
<b>Faixa de temperatura</b>	-20 °C to +80 °C
<b>Área de vedação</b>	Parallel version: O-ring in housing
<b>Material</b>	Polímero e latão niquelado
<b>Anel de pressão</b>	Plastic



## Nota

Outras indicações a pedido.

## Descrição

Push-in fittings series manufactured in plastic and nickel-plated brass. All parts are suitable for use with hoses, tubes or pipes made of plastic and copper.

## Artigo

Descrição	Rosca	para Ø externo da mangueira	Parafuso sextavado interno (mm)	L1 (mm)	L2 (mm)	SW
K- 07 40 06 60	G 1/8	4 mm	4,0	45,0	43,8	14 mm
K- 07 40 06 61	G 1/8	6 mm	4,0	42,6	43,8	14 mm
K- 07 40 06 62	G 1/8	8 mm	4,0	48,5	43,8	14 mm
K- 07 40 06 58	G 1/4	6 mm	6,0	46,7	58,0	17 mm
K- 07 40 06 59	G 1/4	8 mm	6,0	52,5	59,5	17 mm
K- 07 40 06 56	G 1/4	10 mm	6,0	59,6	58,0	17 mm
K- 07 40 06 57	G 1/4	12 mm	6,0	60,7	59,1	17 mm
K- 07 40 06 65	G 3/8	8 mm	8,0	56,7	60,7	20 mm
K- 07 40 06 63	G 3/8	10 mm	8,0	63,5	60,7	20 mm
K- 07 40 06 64	G 3/8	12 mm	8,0	64,9	60,7	20 mm