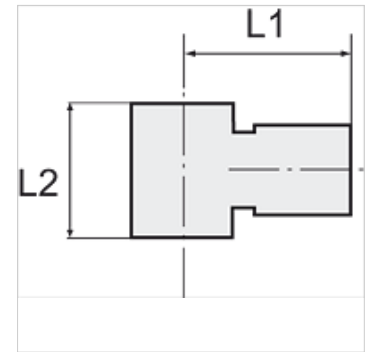


# K-L-RINGSTUECK1

## L-ring nipples

### Características

Pressão de trabalho	Max. 16 bar
Temperatura operacional	-20 °C to +70°C
Material	Latão niquelado
Anel de pressão	Hostaform
Anel tensor	Stainless steel



### Nota

Outras indicações a pedido.

### Descrição

The advanced version of our highly successful push-in fittings series manufactured in nickel-plated brass. Advantages of this new, optimised series: Much easier connection and disconnection of the hose, even with repeated mounting, can also be used for non-calibrated hoses, suitable for vacuum operation.

### Artigo

Descrição	para parafuso fêmea	para Ø externo da mangueira	L1 (mm)	L2 (mm)
K- 07 40 26 82	M 5	4 mm	18,0	9,0
K- 07 40 26 87	G 1/8	4 mm	20,5	15,0
K- 07 40 26 88	G 1/8	6 mm	23,0	15,0
K- 07 40 26 89	G 1/8	8 mm	24,5	15,0
K- 07 40 26 85	G 1/4	6 mm	24,0	17,0
K- 07 40 26 86	G 1/4	8 mm	26,0	17,0
K- 07 40 26 83	G 1/4	10 mm	27,0	17,0
K- 07 40 26 84	G 1/4	12 mm	28,0	17,0
K- 07 40 26 92	G 3/8	8 mm	27,0	20,0
K- 07 40 26 90	G 3/8	10 mm	28,0	20,0
K- 07 40 26 91	G 3/8	12 mm	29,0	20,0