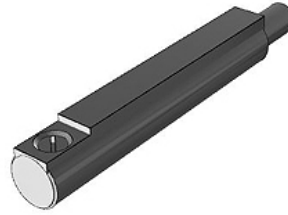


K-REED-SCHALTER D

Reed switch D

Características

Entrada elétrica	axial
Comprimento do cabo	3 m
Série	D



Descrição

Reed switch, series D-A93, direct mounting in round profile groove, version: electrical input port axial, with LED, with cast-in cable, cable length 3.0 m

Artigo

Descrição	Modelo	Definição
K- 07 50 00 01	com LED, com cabo injetado, sem plugue	Reed-switch
K- 07 50 00 02	com LED, com plugue redondo M8 (3 pinos)	Reed-switch