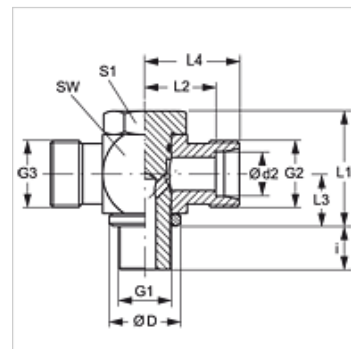


Caracteristici

| | |
|-------------------------|--|
| Racord 1 | Filete cilindrice exterioare BSP |
| Formă de etanșare 1 | Formă E |
| Racord 2 + 3 | Filet metric exterior cilindric |
| Formă de etanșare 2 + 3 | Con interior 24° |
| Tip constructiv | Îmbinări filetate articulate neștrangulate (presiune înaltă) |
| Forma constructivă | Formă de T |
| Set de livrare | Ștuț (fără piuliță olandeză și inel de tăiere) |
| Material | oțel inoxidabil |



Indicație

Indicațiile privind montajul, asamblarea, încărcarea cu presiune și temperaturile de regim admisibile se găsesc în informațiile tehnice referitoare la îmbinările filetate pentru țevi.

Indicații referitoare comandă

NBR sigilii

FPM (Viton) la cerere

Articol

| Denumire | Seria | Presiune de lucru bar | Ø d2 (mm) | G1 | G2 + G3 | Ø D (mm) | i (mm) | L1 (mm) | L2 (mm) | L3 (mm) | L4 (mm) | SW (mm) | S1 (mm) |
|-----------------------|-------|-----------------------|-----------|--------------|------------|----------|--------|---------|---------|---------|---------|---------|---------|
| XSTOR 04 LL VA | LL | PN 63 | 4 | G 1/8" -28 | M 8 x 1 | 14,0 | 8 | 24 | 11,0 | 8,0 | 15,0 | 18 | 17 |
| XSTOR 06 LL VA | LL | PN 63 | 6 | G 1/8" -28 | M 10 x 1 | 14,0 | 8 | 24 | 11,5 | 10,0 | 17,0 | 18 | 17 |
| XSTOR 08 LL VA | LL | PN 63 | 8 | G 1/8" -28 | M 12 x 1 | 14,0 | 8 | 24 | 11,5 | 10,0 | 17,0 | 18 | 17 |
| XSTOR NW 04 HL VA | L | PN 250 | 6 | G 1/8" -28 | M 12 x 1,5 | 14,0 | 8 | 24 | 12,0 | 10,5 | 19,0 | 17 | 17 |
| XSTOR NW 06 HL VA | L | PN 250 | 8 | G 1/4" -19 | M 14 x 1,5 | 18,0 | 12 | 30 | 14,5 | 14,0 | 22,0 | 22 | 19 |
| XSTOR NW 08 HL VA | L | PN 250 | 10 | G 1/4" -19 | M 16 x 1,5 | 18,0 | 12 | 30 | 15,5 | 14,0 | 22,0 | 22 | 19 |
| XSTOR NW 10 HL 1/4 VA | L | PN 250 | 12 | G 1/4" -19 | M 18 x 1,5 | 18,0 | 12 | 30 | 15,5 | 14,0 | 22,5 | 22 | 22 |
| XSTOR NW 10 HL VA | L | PN 250 | 12 | G 3/8" -19 | M 18 x 1,5 | 22,0 | 12 | 36 | 18,0 | 16,5 | 28,0 | 27 | 24 |
| XSTOR NW 13 HL VA | L | PN 250 | 15 | G 1/2" -14 | M 22 x 1,5 | 26,0 | 14 | 45 | 21,5 | 21,5 | 29,0 | 32 | 30 |
| XSTOR NW 16 HL VA | L | PN 315 | 18 | G 1/2" -14 | M 26 x 1,5 | 26,0 | 14 | 45 | 21,0 | 21,5 | 28,0 | 32 | 30 |
| XSTOR NW 20 HL VA | L | PN 160 | 22 | G 3/4" -14 | M 30 x 2 | 32,0 | 16 | 53 | 27,5 | 24,0 | 35,0 | 41 | 36 |
| XSTOR NW 25 HL VA | L | PN 160 | 28 | G 1" -11 | M 36 x 2 | 39,0 | 18 | 66 | 32,0 | 30,5 | 40,0 | 50 | 46 |
| XSTOR NW 32 HL VA | L | PN 160 | 35 | G 1.1/4" -11 | M 45 x 2 | 49,0 | 20 | 76 | 36,0 | 35,5 | 47,0 | 60 | 55 |
| XSTOR NW 40 HL VA | L | PN 160 | 42 | G 1.1/2" -11 | M 52 x 2 | 55,0 | 22 | 87 | 40,5 | 40,5 | 51,0 | 70 | 60 |
| XSTOR NW 03 HS VA | S | PN 315 | 6 | G 1/4" -19 | M 14 x 1,5 | 18,0 | 12 | 30 | 16,5 | 14,0 | 22,0 | 22 | 19 |
| XSTOR NW 04 HS VA | S | PN 315 | 8 | G 1/4" -19 | M 16 x 1,5 | 18,0 | 12 | 30 | 16,5 | 14,0 | 22,0 | 22 | 19 |
| XSTOR NW 06 HS 1/4 VA | S | PN 315 | 10 | G 1/4" -19 | M 18 x 1,5 | 18,0 | 12 | 30 | 16,5 | 14,0 | 24,0 | 22 | 22 |
| XSTOR NW 06 HS VA | S | PN 315 | 10 | G 3/8" -19 | M 18 x 1,5 | 22,0 | 12 | 36 | 18,5 | 16,5 | 26,0 | 27 | 24 |
| XSTOR NW 08 HS VA | S | PN 315 | 12 | G 3/8" -19 | M 20 x 1,5 | 22,0 | 12 | 36 | 18,5 | 16,5 | 27,0 | 27 | 24 |
| XSTOR NW 10 HS VA | S | PN 315 | 14 | G 1/2" -14 | M 22 x 1,5 | 32,0 | 15 | 45 | 22,5 | 21,5 | 30,0 | 32 | 27 |
| XSTOR NW 13 HS VA | S | PN 315 | 16 | G 1/2" -14 | M 24 x 1,5 | 26,0 | 14 | 45 | 22,0 | 21,5 | 30,0 | 32 | 30 |
| XSTOR NW 16 HS VA | S | PN 160 | 20 | G 3/4" -14 | M 30 x 2 | 32,0 | 16 | 53 | 26,5 | 24,0 | 37,0 | 41 | 36 |
| XSTOR NW 20 HS VA | S | PN 160 | 25 | G 1" -11 | M 36 x 2 | 39,0 | 18 | 66 | 31,5 | 30,5 | 44,0 | 50 | 46 |
| XSTOR NW 25 HS VA | S | PN 160 | 30 | G 1.1/4" -11 | M 42 x 2 | 49,0 | 20 | 76 | 37,0 | 35,5 | 51,0 | 60 | 55 |
| XSTOR NW 32 HS VA | S | PN 160 | 38 | G 1.1/2" -11 | M 52 x 2 | 55,0 | 22 | 87 | 41,5 | 40,5 | 57,0 | 70 | 60 |

Seria: LL = foarte ușoară L = ușoară S = grea - PN = Presiunea nominală PB = Presiunea max. de lucru - Ø d2 = diametru exterior țevă

Variante produs

STOR VA Îmbinare filetată articulată, neștrangulată, forma T, Ștuț cu piuliță olandeză și inel de tăiere