

WEO VS SB

Bucșă de conexiuni de capăt WEO

HANSA FLEX

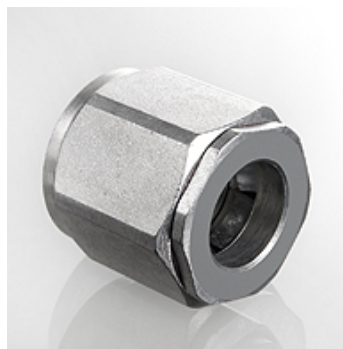
Caracteristici

Racord 1 Bucșă de conexiuni WEO

Formă de etanșare 1 Inel O etanșant

Material Oțel

Protecția suprafeței acoperire galvanică



Articol

| Denumire | Dimensiunea constructivă | Presiune de lucru bar | Ø D1 (mm) | L1 (mm) | SW (mm) | S1 |
|---------------------|--------------------------|-----------------------|--------------|------------|------------|----|
| WEO VS 10 SB | 1/4" | PN 350 | 10 | 28,0 | 20 | 19 |
| WEO VS 13 SB | 3/8" | PN 350 | 13 | 31,0 | 24 | 22 |
| WEO VS 16 SB | 1/2" | PN 350 | 16 | 32,0 | 28 | 27 |
| WEO VS 23 SB | 3/4" | PN 350 | 23 | 44,0 | 32 | 32 |
| WEO VS 30 SB | 1" | PN 250 | 30 | 55,0 | 41 | 41 |

SW , S1, S2 = deschiderea cheii