

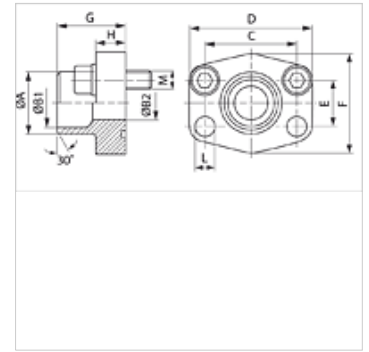
# AFS SRE M (3000 / 6000 PSI)

Inel de sudură cap la cap SAE

**HANSA FLEX**

## Caracteristici

|                             |                                      |
|-----------------------------|--------------------------------------|
| <b>Standard</b>             | SAE J 518 C<br>ISO 6162              |
| <b>Forma constructivă</b>   | drept                                |
| <b>Tip constructiv</b>      | Inel fixat prin sudură SAE           |
| <b>Fixare</b>               | Alezaj pentru șurub                  |
| <b>Set de livrare</b>       | cu set de șuruburi metrice și inel O |
| <b>Material</b>             | S355J2G3 (ST52.3)                    |
| <b>Protecția suprafeței</b> | uns negru                            |



## Indicație

Presiunea maximă de lucru indicată se referă la flanșă! Presiunea efectivă de lucru se determină în funcție de țevă (grosimea peretelui) și a calității țevii!

## Articol

| Denumire         | Seria de presiuni | PB 10.9 (bar) | Dimensiunea constructivă | Țevă        | A (mm) | B1 (mm) | B2 (mm) | G (mm) | C (mm) | D (mm) | E (mm) | F (mm) | H (mm) | L (mm) | M metr.   |
|------------------|-------------------|---------------|--------------------------|-------------|--------|---------|---------|--------|--------|--------|--------|--------|--------|--------|-----------|
| AFS 80 SRE 20 M  | 3000 PSI          | 350           | 1/2"                     | 20 x 3      | 20     | 14,0    | 14      | 35,0   | 38,1   | 54     | 17,5   | 46     | 16,0   | 9,0    | M 8 x 30  |
| AFS 80 SRE 22 M  | 3000 PSI          | 350           | 1/2"                     | 22 x 3      | 22     | 16,0    | 13      | 35,0   | 38,1   | 54     | 17,5   | 46     | 16,0   | 9,0    | M 8 x 30  |
| AFS 100 SRE 25 M | 3000 PSI          | 350           | 3/4"                     | 25 x 3      | 25     | 19,0    | 19      | 36,0   | 47,6   | 65     | 22,2   | 50     | 18,0   | 11,0   | M 10 x 35 |
| AFS 100 SRE 28 M | 3000 PSI          | 350           | 3/4"                     | 28 x 3      | 28     | 21,5    | 19      | 36,0   | 47,6   | 65     | 22,2   | 50     | 18,0   | 11,0   | M 10 x 35 |
| AFS 102 SRE 30 M | 3000 PSI          | 315           | 1"                       | 30 x 4      | 30     | 22,0    | 22      | 38,0   | 52,4   | 70     | 26,2   | 55     | 18,0   | 11,0   | M 10 x 35 |
| AFS 102 SRE 35 M | 3000 PSI          | 315           | 1"                       | 35 x 4      | 35     | 27,0    | 25      | 38,0   | 52,4   | 70     | 26,2   | 55     | 18,0   | 11,0   | M 10 x 35 |
| AFS 104 SRE 38 M | 3000 PSI          | 250           | 1.1/4"                   | 38 x 4      | 38     | 30,0    | 30      | 41,0   | 58,7   | 79     | 30,2   | 68     | 21,0   | 11,5   | M 10 x 40 |
| AFS 104 SRE 42 M | 3000 PSI          | 250           | 1.1/4"                   | 42 x 3      | 43     | 36,0    | 31      | 41,0   | 58,7   | 79     | 30,2   | 68     | 21,0   | 11,5   | M 10 x 40 |
| AFS 106 SRE 38 M | 3000 PSI          | 200           | 1.1/2"                   | 38 x 4      | 38     | 30,0    | 30      | 44,0   | 69,9   | 93     | 35,7   | 78     | 25,0   | 13,5   | M 12 x 45 |
| AFS 106 SRE 42 M | 3000 PSI          | 200           | 1.1/2"                   | 42 x 3      | 42     | 36,0    | 36      | 44,0   | 69,9   | 93     | 35,7   | 78     | 25,0   | 13,5   | M 12 x 45 |
| AFS 106 SRE 48 M | 3000 PSI          | 200           | 1.1/2"                   | 48,3 x 4,5  | 49     | 38,0    | 38      | 44,0   | 69,9   | 93     | 35,7   | 78     | 25,0   | 13,5   | M 12 x 45 |
| AFS 108 SRE 60 M | 3000 PSI          | 200           | 2"                       | 60,3 x 5,6  | 61     | 49,0    | 49      | 45,0   | 77,8   | 102    | 42,9   | 90     | 25,0   | 13,5   | M 12 x 45 |
| AFS 110 SRE 76 M | 3000 PSI          | 160           | 2.1/2"                   | 76,1 x 7,1  | 77     | 62,0    | 62      | 50,0   | 88,9   | 114    | 50,8   | 105    | 25,0   | 13,5   | M 12 x 45 |
| AFS 112 SRE 76 M | 3000 PSI          | 160           | 3"                       | 76,1 x 7,1  | 77     | 62,0    | 62      | 51,0   | 106,4  | 134    | 61,9   | 124    | 26,0   | 17,5   | M 16 x 50 |
| AFS 401 SRE 20 M | 6000 PSI          | 400           | 1/2"                     | 20 x 3      | 20     | 14,0    | 14      | 34,0   | 40,5   | 54     | 18,2   | 46     | 16,0   | 9,0    | M 8 x 30  |
| AFS 402 SRE 20 M | 6000 PSI          | 400           | 3/4"                     | 20 x 3      | 20     | 14,0    | 14      | 35,0   | 50,8   | 71     | 23,8   | 55     | 21,0   | 11,0   | M 10 x 35 |
| AFS 402 SRE 25 M | 6000 PSI          | 400           | 3/4"                     | 25 x 4      | 25     | 17,0    | 17      | 35,0   | 50,8   | 71     | 23,8   | 55     | 21,0   | 11,0   | M 10 x 35 |
| AFS 403 SRE 25 M | 6000 PSI          | 400           | 1"                       | 25 x 4      | 25     | 17,0    | 17      | 42,0   | 57,2   | 81     | 27,8   | 65     | 25,0   | 13,0   | M 12 x 45 |
| AFS 403 SRE 30 M | 6000 PSI          | 400           | 1"                       | 30 x 4      | 30     | 22,0    | 22      | 42,0   | 57,2   | 81     | 27,8   | 65     | 25,0   | 13,0   | M 12 x 45 |
| AFS 404 SRE 30 M | 6000 PSI          | 400           | 1.1/4"                   | 30 x 4      | 30     | 22,0    | 22      | 44,0   | 66,7   | 95     | 31,8   | 78     | 25,0   | 15,0   | M 14 x 45 |
| AFS 404 SRE 38 M | 6000 PSI          | 400           | 1.1/4"                   | 38 x 6      | 38     | 26,0    | 26      | 44,0   | 66,7   | 95     | 31,8   | 78     | 25,0   | 15,0   | M 14 x 45 |
| AFS 405 SRE 38 M | 6000 PSI          | 400           | 1.1/2"                   | 38 x 6      | 38     | 26,0    | 26      | 56,0   | 49,4   | 112    | 36,5   | 94     | 28,0   | 17,0   | M 16 x 50 |
| AFS 405 SRE 48 M | 6000 PSI          | 400           | 1.1/2"                   | 48,3 x 8    | 49     | 32,0    | 32      | 56,0   | 79,4   | 112    | 36,5   | 94     | 28,0   | 17,0   | M 16 x 50 |
| AFS 405 SRE 60 M | 6000 PSI          | 400           | 1.1/2"                   | 60,3 x 10   | 61     | 40,0    | 40      | 56,0   | 79,4   | 112    | 36,5   | 94     | 27,0   | 17,0   | M 16 x 50 |
| AFS 406 SRE 60 M | 6000 PSI          | 400           | 2"                       | 60,3 x 10   | 61     | 40,0    | 40      | 65,0   | 96,8   | 134    | 44,5   | 114    | 37,0   | 21,0   | M 20 x 60 |
| AFS 406 SRE 76 M | 6000 PSI          | 400           | 2"                       | 76,1 x 12,5 | 76     | 50,0    | 48      | 80,0   | 96,8   | 134    | 44,5   | 122    | 33,0   | 21,0   | M 20 x 60 |

PN = Presiunea nominală PB = Presiunea max. de lucru - Ø = Diametrul exterior al țevii

## Variante produs

|                                    |   |
|------------------------------------|---|
| <b>AFS SRE (3000 PSI)</b>          | Inel de sudură cap la cap SAE, numai flanșă                     |
| <b>AFS SRE U (3000 / 6000 PSI)</b> | Inel de sudură cap la cap SAE, cu set de șuruburi UNC și inel O |