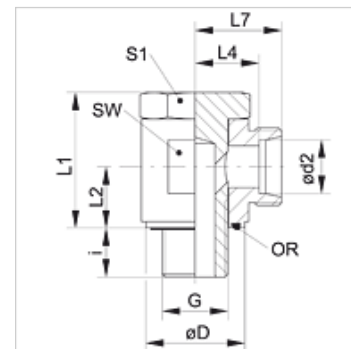


### Caracteristici

Racord 1	Filet metric exterior cilindric
Formă de etanșare 1	Formă E
Racord 2	Filet metric exterior cilindric
Formă de etanșare 2	Con interior 24°
Tip constructiv	Îmbinare filetată articulată neștrangulată
Forma constructivă	Racord 90°
Standard	DIN 2353 ISO 8434-1
Set de livrare	Ștuț (fără piuliță olandeză și inel de tăiere)
Material	Oțel
Protecția suprafeței	acoperire galvanică



### Indicație

Indicațiile privind montajul, asamblarea, încărcarea cu presiune și temperaturile de regim admisibile se găsesc în informațiile tehnice referitoare la îmbinările filetate pentru țevi.

### Articol

Denumire	Seria	Presiune de lucru bar	Ø d2 (mm)	G	Ø D (mm)	i (mm)	L1 (mm)	L2 (mm)	L4 (mm)	L7 (mm)	SW (mm)	S1	Inel O
XSDOM 06 LL	LL	PN 100	6	M 10 x 1	14,5	8,0	23,5	10,5	13,5	19,0	17	17	7,65 x 1,78
XSDOM 08 LL	LL	PN 100	8	M 10 x 1	14,5	8,0	23,5	10,5	13,5	19,0	17	17	7,65 x 1,78
XSDOM NW 04 HL	L	PN 315	6	M 10 x 1	14,0	8,0	24,0	10,5	12,0	19,0	17	17	7,65 x 1,78
XSDOM NW 06 HL	L	PN 315	8	M 12 x 1,5	17,0	12,0	30,0	14,0	14,5	21,5	22	19	11,10 x 1,78
XSDOM NW 08 HL	L	PN 315	10	M 14 x 1,5	19,0	12,0	30,0	14,0	15,5	22,5	22	19	11,10 x 1,78
XSDOM NW 10 HL	L	PN 315	12	M 16 x 1,5	21,0	12,0	36,0	16,5	18,0	25,0	27	24	14,00 x 1,78
XSDOM NW 10 HL 18	L	PN 315	12	M 18 x 1,5	23,5	12,0	35,0	16,5	18,0	25,0	27	24	18,77 x 1,78
XSDOM NW 13 HL	L	PN 315	15	M 18 x 1,5	23,0	12,0	39,5	18,5	21,5	28,5	30	27	18,77 x 1,78
XSDOM NW 16 HL	L	PN 315	18	M 22 x 1,5	27,0	14,0	45,0	21,5	21,0	28,5	32	30	18,77 x 1,78
XSDOM NW 20 HL	L	PN 160	22	M 26 x 1,5	31,0	16,0	53,0	24,0	27,5	35,0	41	36	23,81 x 2,62
XSDOM NW 25 HL	L	PN 160	28	M 33 x 2	39,0	18,0	66,0	30,5	32,0	39,5	50	46	29,82 x 2,62
XSDOM NW 32 HL	L	PN 160	35	M 42 x 2	49,0	20,0	76,0	35,5	36,0	46,5	60	55	37,77 x 2,62
XSDOM NW 40 HL	L	PN 160	42	M 48 x 2	55,0	22,0	87,0	40,5	40,5	51,5	70	60	41,28 x 3,53
XSDOM NW 03 HS	S	PN 400	6	M 12 x 1,5	17,5	12,0	30,0	14,0	16,5	23,5	22	19	11,10 x 1,78
XSDOM NW 04 HS	S	PN 400	8	M 14 x 1,5	19,0	12,0	30,0	14,0	16,5	23,5	22	19	11,10 x 1,78
XSDOM NW 06 HS	S	PN 400	10	M 16 x 1,5	21,0	12,0	35,0	16,5	18,5	26,0	27	24	14,00 x 1,78
XSDOM NW 08 HS	S	PN 400	12	M 18 x 1,5	23,0	12,0	39,5	18,5	20,0	27,5	30	27	18,77 x 1,78
XSDOM NW 10 HS	S	PN 400	14	M 20 x 1,5	25,0	14,0	43,5	20,0	22,5	30,5	32	30	18,77 x 1,78
XSDOM NW 13 HS	S	PN 315	16	M 22 x 1,5	27,0	14,0	45,0	21,5	22,0	30,5	32	30	18,77 x 1,78
XSDOM NW 16 HS	S	PN 315	20	M 27 x 2	32,0	16,0	53,0	24,0	26,5	37,0	41	36	23,81 x 2,62
XSDOM NW 20 HS	S	PN 250	25	M 33 x 2	39,0	18,0	66,0	30,5	31,5	43,5	50	46	29,82 x 2,62
XSDOM NW 25 HS	S	PN 160	30	M 42 x 2	49,0	20,0	76,0	35,5	37,0	50,5	60	55	37,77 x 2,62
XSDOM NW 32 HS	S	PN 160	38	M 48 x 2	55,0	22,0	87,0	40,5	41,5	57,5	70	60	41,28 x 3,53

PN = Presiunea nominală PB = Presiunea max. de lucru - Seria: LL = foarte ușoară L = ușoară S = grea - Ø = Diametrul exterior al țevii

### Variante produs

XSDOM VA	Îmbinare filetată articulată, neștrangulată, 90°, oțel inoxidabil
SDOM	Îmbinare filetată articulată, neștrangulată, 90°, Oțel