

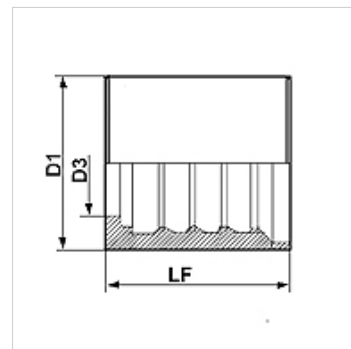
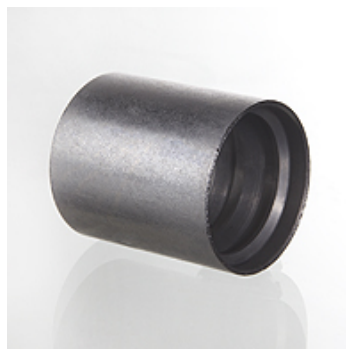
# PHD 200

Montură de sertizat pentru furtun cu împletitură

**HANSA FLEX**

## Caracteristici

|                      |  |
|----------------------|--|
| Tip montură          | Montură cu exfoliere   |
| adekvat pentru       | 2SN (HD 200, HD 200T, HF 200, HW 200, HDB 200)<br>1SC (KP 400)<br>4SP (HD 400) |
| Material             | Oțel   |
| Protecția suprafeței | acoperire galvanică  |



## Indicație

Tipul de montură alocat depinde de tipul furtunului.

## Articol

| Denumire | DN* | Dimensiune | Țol    | D1<br>(mm) | D3<br>(mm) | LF<br>(mm) |
|----------|-----|------------|--------|------------|------------|------------|
| PHD 204  | 5   | 3          | 3/16"  | 21         | 8,5        | 26,0       |
| PHD 206  | 6   | 4          | 1/4"   | 22         | 11,4       | 30,0       |
| PHD 208  | 8   | 5          | 5/16"  | 23         | 12,5       | 30,0       |
| PHD 210  | 10  | 6          | 3/8"   | 26         | 14,5       | 31,0       |
| PHD 213  | 12  | 8          | 1/2"   | 30         | 18,3       | 32,0       |
| PHD 416  | 16  | 10         | 5/8"   | 33         | 21,7       | 38,0       |
| PHD 220  | 19  | 12         | 3/4"   | 38         | 24,4       | 42,5       |
| PHD 225  | 25  | 16         | 1"     | 46         | 30,5       | 51,0       |
| PHD 232  | 31  | 20         | 1.1/4" | 57         | 38,0       | 58,0       |
| PHD 240  | 38  | 24         | 1.1/2" | 65         | 44,3       | 62,0       |
| PHD 250  | 51  | 32         | 2"     | 79         | 57,0       | 73,5       |
| PHD 260  | 60  | 40         | 2.3/8" | 84         | 67,1       | 79,0       |
| PHD 276  | 76  | 48         | 3"     | 105        | 81,8       | 80,0       |

DN = diametru nominal