

# PR V1 (M)

Țeavă de oțel de precizie, metric, 1.4301

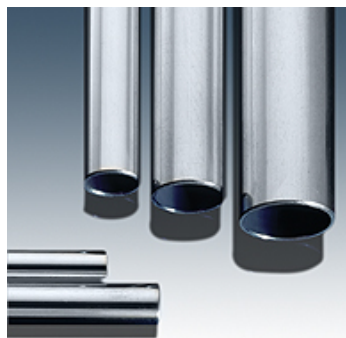
**HANSA FLEX**

## Caracteristici

Tip constructiv Țeavă de oțel de precizie, metric

Material Oțel superior 1.4301

Lungime țeavă 6 metri



## Articol

| Denumire     | Ø d2 (mm) | Toleranță diametru exterior +/- (mm) | Ø d1 (mm) | S (mm) | Toleranță diametru interior +/- (mm) | Solicitare tip I (bar) | Solicitare tip III (bar) |
|--------------|-----------|--------------------------------------|-----------|--------|--------------------------------------|------------------------|--------------------------|
| PR 12-2.5 V1 | 12,0      | -                                    | 7,0       | 2,50   | -                                    | -                      | -                        |
| PR 14-2.5 V1 | 14,0      | -                                    | 9,0       | 2,50   | -                                    | -                      | -                        |
| PR 18-3 V1   | 18,0      | -                                    | 12,0      | 3,00   | -                                    | -                      | -                        |
| PR 04-1 V1   | 4,0       | 0,08                                 | 2,0       | 1,00   | 0,15                                 | 558                    | 376                      |
| PR 05-1 V1   | 5,0       | 0,08                                 | 3,0       | 1,00   | 0,15                                 | 447                    | 311                      |
| PR 06-1 V1   | 6,0       | 0,08                                 | 4,0       | 1,00   | 0,15                                 | 372                    | 265                      |
| PR 06-1.5 V1 | 6,0       | 0,08                                 | 3,0       | 1,50   | 0,15                                 | 610                    | 405                      |
| PR 08-1 V1   | 8,0       | 0,08                                 | 6,0       | 1,00   | 0,15                                 | 279                    | 204                      |
| PR 08-1.5 V1 | 8,0       | 0,08                                 | 5,0       | 1,50   | 0,15                                 | 460                    | 319                      |
| PR 10-1 V1   | 10,0      | 0,08                                 | 8,0       | 1,00   | 0,15                                 | 223                    | 166                      |
| PR 10-1.5 V1 | 10,0      | 0,08                                 | 7,0       | 1,50   | 0,15                                 | 369                    | 262                      |
| PR 12-1 V1   | 12,0      | 0,08                                 | 10,0      | 1,00   | 0,15                                 | 186                    | 140                      |
| PR 12-1.5 V1 | 12,0      | 0,08                                 | 9,0       | 1,50   | 0,15                                 | 307                    | 223                      |
| PR 12-2 V1   | 12,0      | 0,08                                 | 8,0       | 2,00   | 0,15                                 | 428                    | 299                      |
| PR 12-3 V1   | 12,0      | 0,08                                 | 6,0       | 3,00   | 0,15                                 | 670                    | 436                      |
| PR 14-2 V1   | 14,0      | 0,08                                 | 10,0      | 2,00   | 0,15                                 | 367                    | 261                      |
| PR 14-3 V1   | 14,0      | 0,08                                 | 8,0       | 3,00   | 0,15                                 | 575                    | 395                      |
| PR 15-1.5 V1 | 15,0      | 0,08                                 | 12,0      | 1,50   | 0,15                                 | 246                    | 182                      |
| PR 16-1 V1   | 16,0      | 0,08                                 | 14,0      | 1,00   | 0,08                                 | 152                    | 115                      |
| PR 16-2 V1   | 16,0      | 0,08                                 | 12,0      | 2,00   | 0,15                                 | 321                    | 232                      |
| PR 18-1 V1   | 18,0      | 0,08                                 | 16,0      | 1,00   | 0,08                                 | 135                    | 104                      |
| PR 18-1.5 V1 | 18,0      | 0,08                                 | 15,0      | 1,50   | 0,08                                 | 216                    | 161                      |
| PR 18-2 V1   | 18,0      | 0,08                                 | 14,0      | 2,00   | 0,08                                 | 297                    | 216                      |
| PR 22-1 V1   | 22,0      | 0,08                                 | 20,0      | 1,00   | 0,08                                 | 110                    | 85                       |
| PR 20-2 V1   | 20,0      | 0,08                                 | 16,0      | 2,00   | 0,15                                 | 257                    | 189                      |
| PR 22-1.5 V1 | 22,0      | 0,08                                 | 19,0      | 1,50   | 0,08                                 | 176                    | 133                      |
| PR 22-2 V1   | 22,0      | 0,08                                 | 18,0      | 2,00   | 0,15                                 | 233                    | 173                      |
| PR 24-2 V1   | 24,0      | 0,08                                 | 20,0      | 2,00   | 0,15                                 | 214                    | 160                      |
| PR 25-5 V1   | 25,0      | 0,08                                 | 15,0      | 5,00   | 0,15                                 | 554                    | 373                      |
| PR 28-1 V1   | 28,0      | 0,08                                 | 26,0      | 1,00   | 0,08                                 | 87                     | 67                       |
| PR 28-2 V1   | 28,0      | 0,08                                 | 24,0      | 2,00   | 0,08                                 | 191                    | 143                      |
| PR 28-3 V1   | 28,0      | 0,08                                 | 22,0      | 3,00   | 0,15                                 | 287                    | 210                      |
| PR 28-4 V1   | 28,0      | 0,15                                 | 20,0      | 4,00   | 0,15                                 | 384                    | 272                      |
| PR 30-2 V1   | 30,0      | 0,08                                 | 26,0      | 2,00   | 0,08                                 | 178                    | 134                      |
| PR 30-3 V1   | 30,0      | 0,08                                 | 24,0      | 3,00   | 0,08                                 | 275                    | 201                      |
| PR 30-4 V1   | 30,0      | 0,15                                 | 22,0      | 4,00   | 0,15                                 | 358                    | 256                      |
| PR 30-5 V1   | 30,0      | 0,15                                 | 20,0      | 5,00   | 0,20                                 | 450                    | 313                      |
| PR 38-4 V1   | 38,0      | -                                    | 30,0      | 4,00   | -                                    | -                      | -                        |
| PR 40-4 V1   | 40,0      | 0,15                                 | 32,0      | 4,00   | 0,20                                 | 265                    | 195                      |
| PR 40-5 V1   | 40,0      | 0,15                                 | 30,0      | 5,00   | 0,20                                 | 337                    | 243                      |
| PR 50-1.5 V1 | 50,0      | 0,20                                 | 47,0      | 1,50   | 0,20                                 | 63                     | 50                       |
| PR 50-2 V1   | 50,0      | 0,20                                 | 46,0      | 2,00   | 0,20                                 | 93                     | 72                       |
| PR 57-2 V1   | 57,0      | 0,25                                 | 53,0      | 2,00   | 0,25                                 | 76                     | 59                       |
| PR 64-2 V1   | 64,0      | 0,25                                 | 60,0      | 2,00   | 0,25                                 | 68                     | 53                       |
| PR 70-2 V1   | 70,0      | 0,25                                 | 66,0      | 2,00   | 0,25                                 | 62                     | 48                       |