

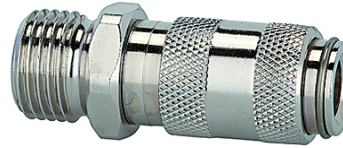
K-SVKM NW 2,7 AG MS NI

Quick disconnect couplings DN 2.7, nickel-plated brass, male

HANSA FLEX

Caracteristici

| | |
|---|---|
| Presiune de lucru | 0 - 35 bar, maximum static working pressure (non-pulsating) |
| Debit aer | 165 l/min (at 6 bar and $\Delta p = 0.5$ bar) |
| Temperatură mediu | -20 °C to +100 °C |
| Carcasă, manșon, corp al supapei | Nickel-plated brass |
| Arc, inel elastic, bile | stain less steel |
| Material de etanșare | NBR |



Indicație

Alte date sunt disponibile la cerere.

Descriere

One-hand quick disconnect coupling, one side sealing, extremely compact, with a large bore and a small pressure drop. Ideal for: Medical & Dental equipment, instrumentation and control, laboratory equipment, chemical applications, small tools, analysis, miniature pneumatics, engineering.

Articol

| Denumire | Racord | Lungime (mm) | SW (mm) |
|----------------|------------|--------------|---------|
| K- 07 35 06 18 | M 5 male | 26,0 | 9 |
| K- 07 35 06 19 | G 1/8 male | 28,0 | 11 |