

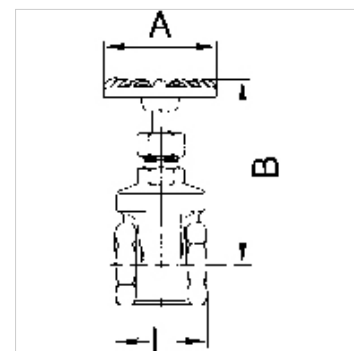
# K-MUFFEN ABSPERRSCHIEBER VA

Female thread gate valves

**HANSA FLEX**

## Caracteristici

Presiune de lucru	max. 14 bar
Temperatură mediu	max. +160 °C
Carcasă, piese interioare	Stainless Steel 1.4401/1.4408
Garnitură de etanșare	PTFE
Rotiță de reglare	Aluminium



## Indicație

Alte date sunt disponibile la cerere.

## Articol

Denumire	DN	Filet	A (mm)	B (mm)	L (mm)
K- 07 30 22 01	15	G 1/2	70,0	100,0	55,0
K- 07 30 22 02	20	G 3/4	70,0	107,0	60,0
K- 07 30 22 03	25	G 1	80,0	110,0	65,0
K- 07 30 22 04	32	G 1 1/4	80,0	130,0	75,0
K- 07 30 22 05	40	G 1 1/2	90,0	147,0	85,0
K- 07 30 22 06	50	G 2	100,0	170,0	95,0