

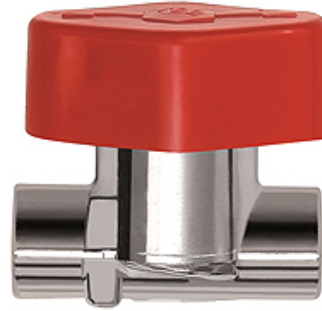
K-SNV ABSP V MS CR

Quick-stop shut-off valves, chrome-plated brass

HANSA FLEX

Caracteristici

Utilizare	Fuel oil, liquefied gas (in gas phase), compressed air
Presiune de lucru	max. 16 bar for valves with cutting ring connection; max. 4 bar for valves with pipe thread
Descriere filet	G thread acc. DIN EN ISO 228-1
Carcasă	



Indicație

Alte date sunt disponibile la cerere.

Articol

Denumire	DN	Racord
K- 07 30 30 91	7	G 1/4 female thread
K- 07 30 30 92	8	G 3/8 female thread
K- 07 30 30 93	12	G 1/2 female thread
K- 07 30 30 94	4	6 mm pipe
K- 07 30 30 95	6	8 mm pipe
K- 07 30 25 22	7	10 mm pipe
K- 07 30 30 96	10	12 mm pipe
K- 07 30 25 23	12	15 mm pipe