

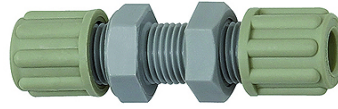
K-SCHOTTVERBINDUNGEN

Bulkhead couplings

HANSA FLEX

Caracteristici

Presiune de lucru	Dependent on operating temperature; Max. 10 bar (at 20 °C); Max. 1 bar (at 60 °C)
Corpul fittingului	Polyamide (PA)
Inel de fixare	Polypropylene (PP)
Piuliță	Polypropylene (PP)



Indicație

Alte date sunt disponibile la cerere.

Descriere

Manufactured from high impact-resistant, UV-stabilised engineering plastic, extremely resistant to weathering. Good chemical resistance to benzine, diesel oil, fuel oil and alkalis.
Not suitable for use with acids.

Articol

Denumire	Filet	pentru furtun	L1 (mm)	Deschiderea cheii fixe
K- 07 40 32 74	M 10 x 1	4 mm / 6 mm	53,0	14 mm
K- 07 40 32 75	M 14 x 1,5	6 mm / 8 mm	64,0	19 mm
K- 07 40 32 76	M 16 x 1,5	8 mm / 10 mm	73,0	22 mm
K- 07 40 32 77	M 18 x 1,5	9 mm / 12 mm	84,0	24 mm