

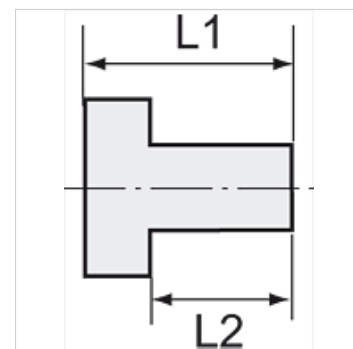
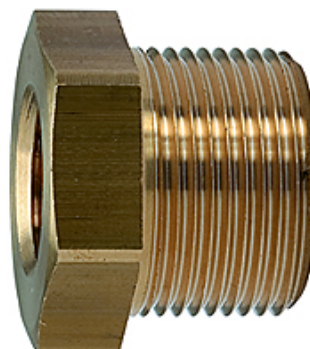
K-RD NIPPEL KURZ 1

Reducing nipples, short type

HANSA FLEX

Caracteristici

| | |
|----------------------|---------------------------------|
| Presiune de lucru | 10 bar |
| Temperatură mediu | max. +90 °C |
| Temperatură ambiantă | Max. +90 °C |
| Material | Brass with a bare metal surface |



Indicație

The dimensions of the standard screw fittings may change slightly during the life of the catalogue as a result of optimisation processes.

Alte date sunt disponibile la cerere.

Articol

| Denumire | Filet exterior | Filet interior | L1 (mm) | L2 (mm) | Deschiderea cheii fixe |
|----------------|----------------|----------------|------------|------------|------------------------|
| K- 07 35 11 21 | M 14 x 1.5 | M 10 x 1 | 11,0 | 7,0 | 17 mm |
| K- 07 35 11 22 | M 24 x 1.5 | M 16 x 1.5 | 24,0 | 16,0 | 27 mm |
| K- 07 40 00 48 | G 1/8 | M 5 | 11,0 | 7,0 | 14 mm |
| K- 07 40 00 49 | G 1/4 | M 5 | 14,0 | 10,0 | 17 mm |
| K- 07 40 00 50 | G 1/4 | G 1/8 | 13,0 | 8,0 | 17 mm |
| K- 07 40 00 53 | G 3/8 | G 1/8 | 13,0 | 9,5 | 19 mm |
| K- 07 40 40 83 | G 3/8 | G 1/4 | 13,0 | 9,5 | 19 mm |
| K- 07 40 00 55 | G 1/2 | G 1/8 | 18,0 | 12,0 | 24 mm |
| K- 07 40 00 54 | G 1/2 | G 1/4 | 15,5 | 11,5 | 22 mm |
| K- 07 40 00 51 | G 1/2 | G 3/8 | 15,5 | 11,5 | 22 mm |
| K- 07 40 44 30 | G 3/4 | G 1/4 | 18,0 | 12,0 | 27 mm |
| K- 07 40 00 56 | G 3/4 | G 3/8 | 18,0 | 12,0 | 32 mm |
| K- 07 40 00 52 | G 3/4 | G 1/2 | 21,0 | 14,0 | 32 mm |
| K- 07 40 00 57 | G 1 | G 1/2 | 24,0 | 16,0 | 36 mm |
| K- 07 40 40 84 | G 1 | G 3/4 | 18,0 | 12,0 | 36 mm |
| K- 07 40 44 31 | G 1 1/4 | G 3/4 | 23,0 | 16,0 | 42 mm |
| K- 07 40 00 58 | G 1 1/4 | G 1 | 24,0 | 16,0 | 42 mm |
| K- 07 40 44 32 | G 1 1/2 | G 3/4 | 24,0 | 16,0 | 50 mm |
| K- 07 40 00 59 | G 1 1/2 | G 1 | 24,0 | 16,0 | 48 mm |
| K- 07 40 00 60 | G 1 1/2 | G 1 1/4 | 21,0 | 15,0 | 50 mm |
| K- 07 40 00 61 | G 2 | G 1 | 28,0 | 18,0 | 62 mm |
| K- 07 40 00 62 | G 2 | G 1 1/4 | 26,5 | 18,0 | 62 mm |
| K- 07 40 00 63 | G 2 | G 1 1/2 | 30,0 | 20,0 | 65 mm |