

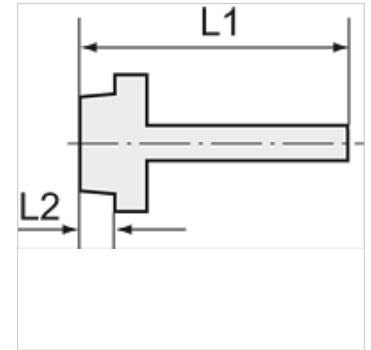
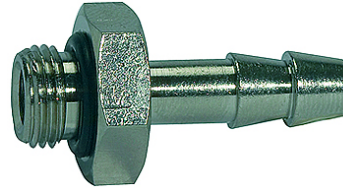
# K-TR AG OR MS NI

Male hose fittings, parallel, with O-ring - nickel-plated brass

**HANSA FLEX**

## Caracteristici

Temperatura de lucru	Max. 80 °C (with O-ring, NBR)
Presiune	Max. 60 bar
Material	Alamă nichelată



## Indicație

The dimensions of the standard screw fittings may change slightly during the life of the catalogue as a result of optimisation processes. Alte date sunt disponibile la cerere.

## Descriere

Suitable for air, water, oil, steam, etc.

## Informații suplimentare

Further types and dimensions on request.

## Articol

Denumire	Filet	pentru furtun	L1 (mm)	L2 (mm)	Deschiderea cheii fixe
K- 07 40 13 59	G 1/8	LW 6 mm	30,0	6,5	14 mm
K- 07 40 13 60	G 1/8	LW 8 mm	31,0	6,0	15 mm
K- 07 40 13 61	G 1/8	LW 9 mm	31,0	6,0	15 mm
K- 07 40 13 62	G 1/4	LW 6 mm	32,0	8,0	17 mm
K- 07 40 13 63	G 1/4	LW 9 mm	33,0	8,0	18 mm
K- 07 40 13 64	G 1/4	LW 12 mm	33,0	8,0	18 mm
K- 07 40 49 89	G 1/4	LW 8 mm	32,0	8,0	17 mm
K- 07 40 49 90	G 1/4	LW 10 mm	33,0	8,0	17 mm
K- 07 40 49 96	G 1/4	LW 13 mm	33,0	8,0	18 mm
K- 07 40 49 97	G 3/8	LW 6 mm	33,0	9,0	20 mm
K- 07 40 49 98	G 3/8	LW 8 mm	33,0	9,0	20 mm
K- 07 40 13 65	G 3/8	LW 9 mm	34,0	9,0	21 mm
K- 07 40 49 91	G 3/8	LW 10 mm	34,0	9,0	20 mm
K- 07 40 13 66	G 3/8	LW 12 mm	34,0	9,0	21 mm
K- 07 40 49 92	G 3/8	LW 13 mm	34,0	9,0	21 mm
K- 07 40 13 67	G 1/2	LW 12 mm	36,0	11,0	26 mm
K- 07 40 49 93	G 1/2	LW 13 mm	36,0	10,0	24 mm
K- 07 40 49 94	G 1/2	LW 16 mm	40,0	10,0	25 mm
K- 07 40 49 95	G 1/2	LW 19 mm	40,0	10,0	24 mm