

# K-HS ALU BLAU

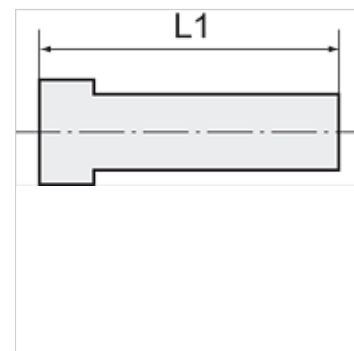
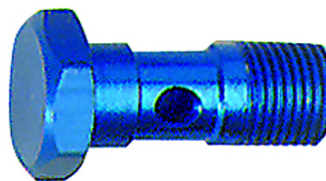
Aluminium banjo bolts

**HANSA FLEX**

## Caracteristici

Presiune de lucru 0 - 10 bar

Domeniu de temperaturi -10 °C to +60 °C



## Indicație

Alte date sunt disponibile la cerere.

## Articol

Denumire	Filet	L1 (mm)	Deschiderea cheii fixe
K- 07 40 33 45	G 1/8	27,0	14 mm
K- 07 40 33 46	G 1/4	29,0	17 mm