

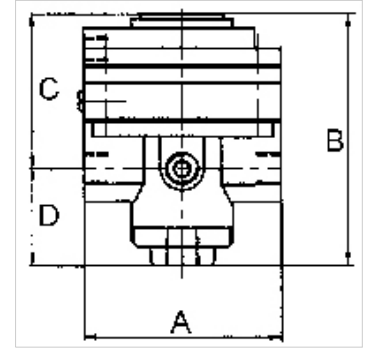
K-PRAEZI DRUCKREGL PNEU FERN

Precision pressure regulators

HANSA FLEX

Caracteristici

Presiune de intrare	Max. 16 bar
Temperatură mediu	max. 60 °C
Temperatură ambientală	Max. 60 °C
Medii	Micro-filtered, unoiled compressed air (0.01 µm)
Racord manometru	G 1/4
Debit	3000 l/min
Racord de dezaerare	G 3/8 (for mounting a silencer)
Presiune de comandă	Max. 10 bar
Racord de aer de control	G 1/8
Material de etanşare	NBR
Carcasă	Die-cast zinc, painted black
Consum de aer propriu	6 l/min at Pin = 16 bar



Indicație

Attention! A set of wearing parts cannot be supplied! These pressure regulators may only be opened in the factory! The given flow rates are based on the following parameters: 3000 l/min: P1: 5 bar, P2: 3 bar, $\Delta p \leq 0,1$ bar.

Alte date sunt disponibile la cerere.

Descriere

With high flow rate and large secondary relief port. Pneumatically controlled diaphragm pressure regulators with large secondary relief port for applications requiring an extremely accurate working pressure, especially at high flow rates. We recommend our »multifix« series of pilot controllers.

Informații suplimentare

1500 l/min: P1: 10 bar, P2: 7 bar, $\Delta p \leq 0.1$ bar.

Articol

Denumire	Filet	Domeniu de reglare	A (mm)	B	C (mm)	D (mm)
K- 07 25 09 35	G 1/2	0.05 - 7 bar (max. 10 bar)	82,0	108,0 mm	64,5	43,5

Piese de schimb

K-HALTERBAUSATZ STANDARD	Holder
K-KM MS	Hexagonal lock nuts, brass
K-SCHALLDAEPFER VYON	Vyon silencers
K-FILTERELEMENT	Filter element
K-XV AGM 2	Double nipples, parallel male thread