

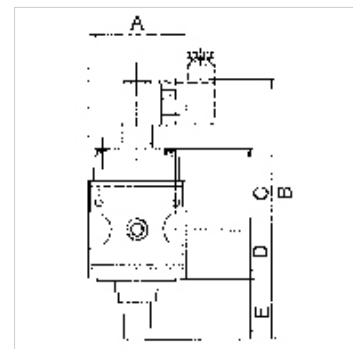
K-SCHALTVENTILE 3/2 MULTIFIX

On-off valves (3/2-way valves)

HANSA FLEX

Caracteristici

Presiune de intrare	Min. 2 bar, max. 10 bar
Temperatură mediu	max. 60 °C
Temperatură ambientală	Max. 60 °C
Conexiune electrică	Device plug PG 9, type B, EN 175301-803
Tip de protecție	IP 65 (P 54) acc. to DIN 40050
Durată de comutare relativ	100 %
Racord de dezaerare	Silencer G 1/4
Material de etanșare	NBR
Carcasă	Die-cast zinc
Măsurarea valorii debitului	At P1 = 6 bar and pressure drop $\Delta p = 1$ bar



Indicație

Alte date sunt disponibile la cerere.

Descriere

Pneumatic systems or parts of systems can be switched on and off by means of an electrical signal. When they are switched off, the system is relieved at the same time.

Indicații referitoare comandă

On-off valves are also available in a pneumatically operated version. Please ask for more information.

Articol

Denumire	Filet	Debit (L/min)	Bobină magnetică	A (mm)	B	C (mm)	D (mm)	E (mm)	Dimensiunea constructivă
K- 07 25 11 65	G 1/4	900	24 V AC, 50 Hz	47,8	138,7 mm	43,7	26,0	17,5	1
K- 07 25 11 66	G 1/4	900	230 V AC, 50 Hz	47,8	138,7 mm	43,7	26,0	17,5	1
K- 07 25 11 67	G 1/4	900	110 V AC, 50 Hz	47,8	138,7 mm	43,7	26,0	17,5	1
K- 07 25 11 68	G 1/4	900	24 V DC	47,8	138,7 mm	43,7	26,0	17,5	1
K- 07 25 11 69	G 1/2	4000	24 V AC, 50 Hz / 12 V DC	68,8	185,0 mm	56,2	33,5	44,1	2
K- 07 25 11 70	G 1/2	4000	230 V AC, 50 Hz	68,8	185,0 mm	56,2	33,5	44,1	2
K- 07 25 11 71	G 1/2	4000	110 V AC, 50 Hz	68,8	185,0 mm	56,2	33,5	44,1	2
K- 07 25 11 72	G 1/2	4000	24 V DC	68,8	185,0 mm	56,2	33,5	44,1	2

Accesorii

K-SCHALLDAE SINTERBR GE MS1 Silencers, sintered bronze, with brass hexagon nut and brass thread

Piese de schimb

K-KOPPELPAKET MEHR	Coupling packet
K-KOPPELPAKET SCHMA	Coupling packet
K-GERAETESTECKER	Coupling socket
K-HALTERBAUSATZ MULTIFIX	Holder
K-MAGNETSPULE MULTIFIX	Solenoid
K-WV 3/2 VORSTEU HAND MULTIFIX	3/2-way valve