

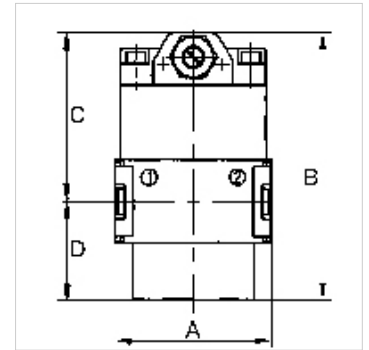
K-ANFAV MULTIFIX MINI

Start-up valves

HANSA FLEX

Caracteristici

Presiune de intrare	Min. 2.5 bar, max. 16 bar
Temperatură mediu	max. 60 °C
Temperatură ambientală	Max. 60 °C
Debit	1600 l/min
Material de etanșare	NBR
Carcasă	Die-cast zinc
Măsurarea valorii debitului	At P1 = 6 bar and pressure drop $\Delta p = 1$ bar



Indicație

If several devices in the »multifix-mini« Series are assembled together, the maximum working pressure is 12 bar.

Alte date sunt disponibile la cerere.

Descriere

Seat valves operated by secondary pressure for controlled pressurisation of pneumatic systems. The full cross-section of the regulator is opened at 50% of the input pressure. With adjustable restrictor!

Articol

Denumire	Filet	A (mm)	B	C (mm)	D (mm)
K- 07 25 11 53	G 1/4	45,0	77,5 mm	48,5	29,0

Accesorii

K-HALTERBAUSATZ Holder

Piese de schimb

K-KOPPELPAKET MEHR Coupling packet