

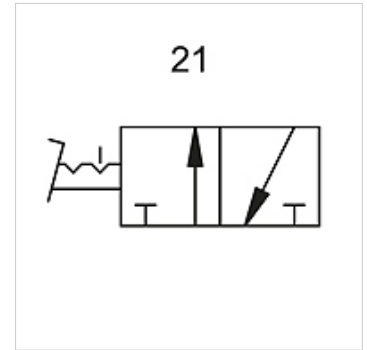
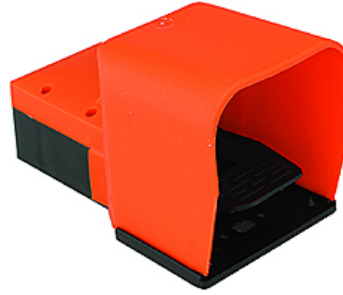
K-WFV 3/2 RASTEND FUS

3/2-way foot-operated valves (bistable, latching, with foot guard)

HANSA FLEX

Caracteristici

Presiune de lucru	2.5 - 10 bar
Domeniu de temperaturi	-10 °C to +60 °C
Debit la 6,3 bari și Δ 0,5 bar	60 NI/min (4 mm and M5), 640 NI/min (G 1/4)
Debit la 6,3 bari și Δ 1 bar	95 NI/min (4 mm and M5), 840 NI/min (G 1/4)



Indicație

Alte date sunt disponibile la cerere.

Descriere

Foot-operated valves, 3/2- and 5/2-way types, bistable or monostable (non-latching).

Articol

Denumire	Racord	Număr schemă electrică
K- 07 15 00 21	M 5	21
K- 07 15 00 22	4 mm	21