

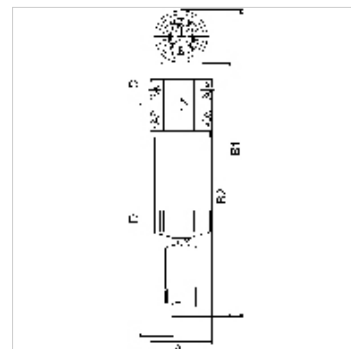
K-FI MIKRO M DIFFERENZ MANO

Micro-filters with differential pressure gauge

HANSA FLEX

Caracteristici

| | |
|---|--|
| Presiune de intrare | Min. 4 bar, Max. 16 bar |
| Domeniu de afișare manometru pentru presiune diferențială | 0 - 2 bar |
| Carcasă, recipient cu filtru | Aluminium |
| Temperatură ambientală | +5 °C to +60 °C |
| Finețea filtrului | 0,01 μm |
| Randament | 99.9999 % |
| Cartuș de filtru | Borosilicate (with glass-fibre and foam plastic) |
| Măsurarea valorii debitului | At P1 = 6 bar and pressure drop $\Delta p = 1.5\%$ |



Indicație

Alte date sunt disponibile la cerere.

Descriere

Suitable for all applications where the standard centrifugal separators do not afford the desired efficiency. The pre-filters and micro-filters are equipped with an automatic drain valve. All devices can be supplied with or without a differential pressure gauge. The differential pressure gauge indicates the degree of contamination of the filter element as a function of the pressure drop.

Articol

| Denumire | Filet | Debit (L/min) | A (mm) | B1 (mm) | B2 (mm) | C (mm) | D (mm) |
|----------------|---------|---------------|--------|---------|---------|--------|--------|
| K- 07 25 13 02 | G 1/4 | 1300 | 82,5 | 407,0 | 335,0 | 57,0 | 353,0 |
| K- 07 25 13 03 | G 3/8 | 1300 | 82,5 | 407,0 | 335,0 | 57,0 | 353,0 |
| K- 07 25 13 04 | G 1/2 | 1300 | 82,5 | 407,0 | 335,0 | 57,0 | 353,0 |
| K- 07 25 13 05 | G 3/4 | 2000 | 82,5 | 477,0 | 405,0 | 57,0 | 493,0 |
| K- 07 25 13 06 | G 1 | 4080 | 118,0 | 492,0 | 420,0 | 72,0 | 458,0 |
| K- 07 25 13 07 | G 1 1/4 | 4580 | 118,0 | 592,0 | 520,0 | 72,0 | 658,0 |
| K- 07 25 13 08 | G 1 1/2 | 6500 | 118,0 | 692,0 | 620,0 | 72,0 | 858,0 |
| K- 07 25 13 09 | G 2 | 9000 | 118,0 | 882,0 | 810,0 | 72,0 | 1238,0 |

Piese de schimb

| | |
|---------------------------|-----------------------------|
| K-FILTERELEMENT SONDER | Filter element |
| K-VERBINDUNGELEMENTE SOND | Connecting sets |
| K-HALTERBAUSATZ | Holder |
| K-DIFFERENZDRUCKMANOMETER | Differential pressure gauge |
| K-AUTOMAT ABLASSVENTIL | Automatic drain valve |