

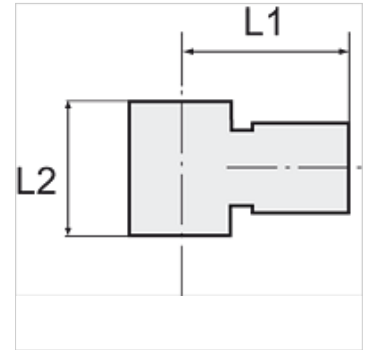
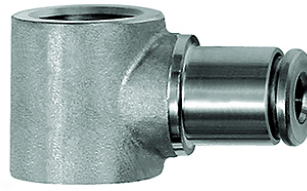
K-L-RINGSTUECK

Ring nipples, single

HANSA FLEX

Caracteristici

Presiune de lucru pulsatorie	Max. 10 bar
Presiune	Max. 15 bar (depending on pipe quality)
Material adecvat pentru conductă	PVDF, PTFE, stainless steel, PA, PU
Standard	G thread acc. to DIN EN ISO 228-1
Temperatură ambientală	-20 °C to max. +150 °C (depending on pipe quality and diameter)
Material	Oțel superior 1.4404
Material de etanșare	FKM



Indicație

Alte date sunt disponibile la cerere.

Descriere

For use with aggressive media and in areas with corrosive outside influences, in the food processing industry and in hygienic and sanitary applications.

Articol

Denumire	Filet	pentru Ø exterior furtun	L1 (mm)	L2 (mm)
K- 07 40 47 10	G 1/8	4 mm	19,5	15,0
K- 07 40 47 11	G 1/8	6 mm	22,0	15,0
K- 07 40 47 12	G 1/8	8 mm	22,5	15,0
K- 07 40 47 08	G 1/4	6 mm	23,5	17,0
K- 07 40 47 09	G 1/4	8 mm	24,0	17,0
K- 07 40 47 07	G 1/4	10 mm	27,0	17,0
K- 07 40 47 13	G 3/8	10 mm	29,0	20,0
K- 07 40 47 14	G 3/8	12 mm	31,0	20,0
K- 07 40 47 06	G 1/2	12 mm	33,0	24,0