

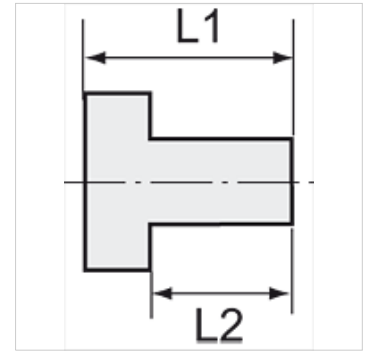
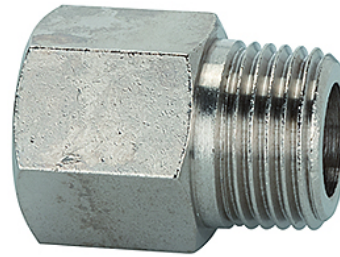
K-VLST K AG-K IG MS NI

Extensions, short, conical male thread, parallel female thread - nickel-plated brass

HANSA FLEX

Caracteristici

Temperatura de lucru	Max. 150 °C
Presiune	Max. 60 bar
Material	Alamă nichelată



Indicație

The dimensions of the standard screw fittings may change slightly during the life of the catalogue as a result of optimisation processes. Alte date sunt disponibile la cerere.

Descriere

Suitable for air, water, oil, steam, etc.

Informații suplimentare

Further types and dimensions on request.

Articol

Denumire	Filet exterior	Filet interior	L1 (mm)	L2 (mm)	Deschiderea cheii fixe
K- 07 40 38 91	R 1/8	G 1/8	20,0	8,0	14 mm
K- 07 40 38 92	R 1/8	G 1/4	22,5	8,0	17 mm
K- 07 40 38 98	R 1/8	G 3/8	22,5	8,0	22 mm
K- 07 40 38 93	R 1/4	G 1/4	25,0	11,0	17 mm
K- 07 40 38 94	R 1/4	G 3/8	28,5	11,0	22 mm
K- 07 40 38 95	R 1/4	G 1/2	29,0	11,0	24 mm
K- 07 40 38 96	R 3/8	G 3/8	28,5	11,5	22 mm
K- 07 40 38 97	R 3/8	G 1/2	32,0	11,5	24 mm
K- 07 40 38 99	R 1/2	G 1/2	34,0	14,0	24 mm
K- 07 40 39 00	R 1/2	G 3/4	35,0	14,0	32 mm