

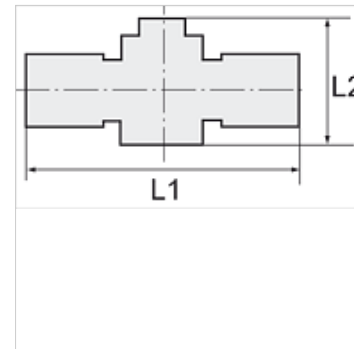
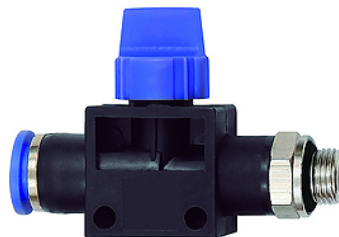
# K-WV 3/2 STECK GEW SCHL

3/2-way pilot valves with male thread and plug connection, flow direction from port to tube, parallel male thread with O-ring

**HANSA FLEX**

## Caracteristici

Presiune de lucru	Max. 15 bar, coarse vacuum
Domeniul de utilizare	Air, vacuum
furtunuri recomandate	PU or PA (nylon)
Medii	Compressed air and all gases or liquids that are compatible with the materials
Domeniu de temperaturi	-20 °C to +80 °C
Suprafață de etanșare	Parallel version: O-ring in housing, Conical version: thread coating
Material	Plastic, Nickel plated brass
Inel de presiune	Plastic



## Indicație

Alte date sunt disponibile la cerere.

## Descriere

Push-in fittings series manufactured in plastic and nickel-plated brass. All parts are suitable for use with hoses, tubes or pipes made of plastic and copper.

## Articol

Denumire	Filet	pentru Ø exterior furtun	L1 (mm)	L2 (mm)	Deschiderea cheii fixe
K- 07 40 43 85	G 1/8	6 mm	58,1	41,5	14 mm
K- 07 40 43 86	G 1/8	8 mm	58,5	41,5	14 mm
K- 07 40 43 83	G 1/4	6 mm	59,6	41,5	14 mm
K- 07 40 43 84	G 1/4	8 mm	60,0	41,5	17 mm
K- 07 40 43 81	G 1/4	10 mm	70,9	46,0	17 mm
K- 07 40 43 82	G 1/4	12 mm	70,9	46,0	21 mm
K- 07 40 43 89	G 3/8	6 mm	61,1	41,5	14 mm
K- 07 40 43 90	G 3/8	8 mm	61,5	41,5	17 mm
K- 07 40 43 87	G 3/8	10 mm	72,4	46,0	20 mm
K- 07 40 43 88	G 3/8	12 mm	71,9	46,0	21 mm
K- 07 40 43 79	G 1/2	10 mm	74,9	46,0	24 mm
K- 07 40 43 80	G 1/2	12 mm	75,4	46,0	24 mm